



TANDEM plus BLUMOTION

Premium Concealed Runners for Wood Drawers

blum.com



TANDEM plus BLUMOTION

TANDEM plus BLUMOTION brings together all of the features, innovations and benefits that Blum has developed since first manufacturing drawer runners in the early 1960s. The first time you open and close a fully loaded drawer, you will quickly realize that TANDEM plus BLUMOTION concealed runners are unmatched in quality, style and running action.





Contents

TANDEM plus BLUMOTION

| | |
|----|--------------------------------|
| 6 | Overview |
| 7 | Testing Standards |
| 8 | General Specifications |
| 10 | Using TANDEM plus BLUMOTION |
| 11 | Drawer Preparation |
| 12 | Standard Applications |
| 22 | Inset Drawer |
| 24 | Narrow Drawer |
| 26 | Lateral Stabilizer for 563/569 |
| 28 | Roll-out Shelf |
| 29 | Bottom Mount Drawer |
| 30 | SPACE CORNER |
| 32 | Locking Devices |
| 34 | Rear Attachment Options |
| 36 | TIP-ON for TANDEM plus |
| 38 | Accessories and Assembly Aids |
| 42 | ORGA-LINE |
| 44 | Additional Information |
| 45 | Part Number Index |

Made in the USA

Manufactured at our North Carolina facility, TANDEM plus BLUMOTION concealed runners are mounted discreetly beneath the drawer and have the quietest opening and softest closing action available.

These top-of-the-line concealed runners are the industry choice for dovetail drawers in high-end cabinetry, in either face frame or frameless.



Adjustable and Versatile

TANDEM plus BLUMOTION concealed runners offer four-dimensional adjustment, elongated holes for depth adjustment, bottom mount holes and exceptional load capacity.

The availability of a wide variety of locking devices, rear mounting brackets, sockets and templates make installation virtually effortless.



The Right Solution for Every Drawer

These concealed runners are the perfect solution for virtually any drawer. Kitchens, vanities, closets, home office and furniture all benefit from the smooth running and soft closing action of TANDEM plus BLUMOTION.

The customer only sees the beauty of the wood drawers while experiencing the quality of motion and soft closing they have come to expect from Blum products.



TANDEM plus BLUMOTION

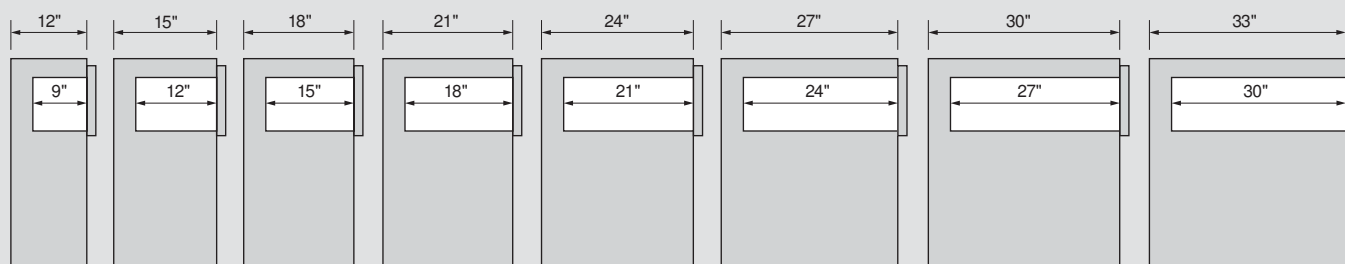


Overview

| Drawer length | Full extension | Full extension with BLUMOTION | | Heavy duty full extension with BLUMOTION | | |
|-------------------------|--------------------------|-------------------------------|------|--|------|--|
| | Maximum drawer thickness | Maximum drawer thickness | | Maximum drawer thickness | | |
| | 5/8" | 5/8" | 3/4" | 5/8" | 3/4" | |
| 9" | 562H | 563H | 563F | | | |
| 12" | | | | | | |
| 15" | | | | | | |
| 18" | | 563H and 563. | | 569H | 569F | |
| 21" | | | | | | |
| 24" | | | | 569. | 569A | |
| 27" | | | | | | |
| 30" | | | | | | |
| Capacity static/dynamic | 100/75 lb | 100/90 lb* | | 150/135 lb* | | |

*Per ANSI/BHMA A156.9 Grade 1 standards on a 21" length drawer box

Standard lengths



TANDEM series runners are based on the American standard 3" cabinet depth system, therefore runner lengths are in 3" increments. TANDEM plus runners are available for drawers from 9" to 30" in length.



Planning Tools

Blum has downloadable Excel® spreadsheets that provide the required parts and calculate the mounting locations for your application.

Planning tools are easily accessible on our website at blum.com/planning



**ISO 9001**

Blum, Inc. is ISO 9001 certified which means that you are assured of consistent quality in every Blum product.

**ANSI/BHMA**

All Blum runners meet or exceed ANSI/BHMA A156.9 Grade 1 requirements. Contact your local Blum representative for more details.

**General Information**

All Blum hardware undergoes strict quality control procedures through all stages of production. Blum hardware is designed for cabinets and cabinet components made from wood, melamine or MDF. Careful attention must be paid to installation and operating instructions when using Blum hardware (see catalogs and instruction sheets for all technical information). The manufacturer must decide on the screws or attachment methods to suit the material being used (i.e. wood, melamine, etc.). The hardware must not be exposed to acidic or corrosive materials (i.e. some household cleaning solutions). To ensure that Blum hardware functions correctly, it must be kept clean and undamaged. For any additional information please contact your Blum representative. Anyone selling Blum hardware must ensure that their customer is aware of any relevant information given in this catalog.

Conditions of Sale and Delivery

All deliveries and services are based on the "general conditions of sale" which are available upon request. The technical presentations and dimensions in illustrations are non-binding. We reserve the right to make changes to specifications at any time. We do not accept any responsibility for any errors which may occur in the production of this catalog.

TANDEM plus BLUMOTION



Complete Runner System

- Full extension concealed runners with BLUMOTION soft close
- Zinc-coated steel
- Concealed roller carriage with permanently lubricated synthetic rollers
- Available in standard and heavy duty
- H and . series for drawers up to 5/8" side material thickness
- F and A series for drawers up to 3/4" side material thickness
- Elongated holes for depth adjustment
- Bottom mount holes on 15", 18" and 21" standard duty
- Tool-free tilt adjustment
- Tool-free rear side-to-side adjustment

Locking Devices

- Stamped steel or zinc die-cast base with synthetic, spring-loaded release levers
- Captive right device, self-aligning left device
- Self-adjusting drawer length tolerance
- Tool-free height adjustment
- Tool-free front side-to-side adjustment
- Available with depth adjustment
- Available for narrow drawers

Rear Mounting Options

- Zinc-coated steel brackets or nylon sockets
- Depth and lateral self-alignment

One Runner for All Applications

TANDEM runners are designed for the American 3" increment cabinet depth system. This feature permits overlay or inset applications to use the same runner. Full length runners make installation in frameless or face frame cabinets possible.

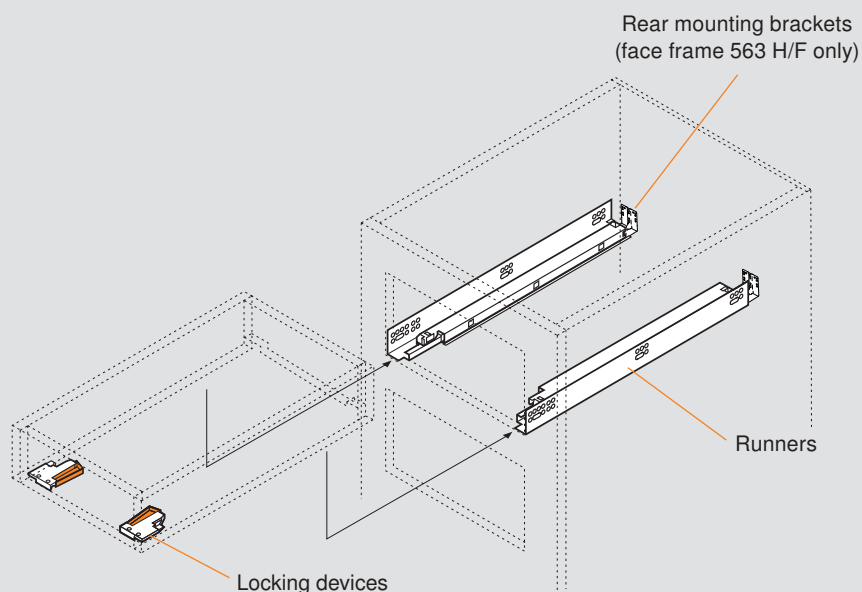
Load Capacities

- 100 lb static, 90 lb dynamic for TANDEM plus BLUMOTION 563 series
- 150 lb static, 135 lb dynamic for TANDEM plus BLUMOTION 569 series

General Specifications

Drawer components

NOTE: For 563. and 569 series, rear brackets and sockets cannot be used. Cabinet sides must be blocked-out flush with the inside of the face frame.



NOTE: Rear mounting brackets used for face frame applications only

Locking devices

Locking devices allow easy insertion and removal of drawers



page 32

Rear mounting options

For use when installing TANDEM runners in face frame cabinets. Not necessary for frameless cabinet installation.



page 34

Accessories



page 38

Concealed Runner Template

A required assembly aid for the pre-boring of TANDEM locking device screw holes and rear hook holes

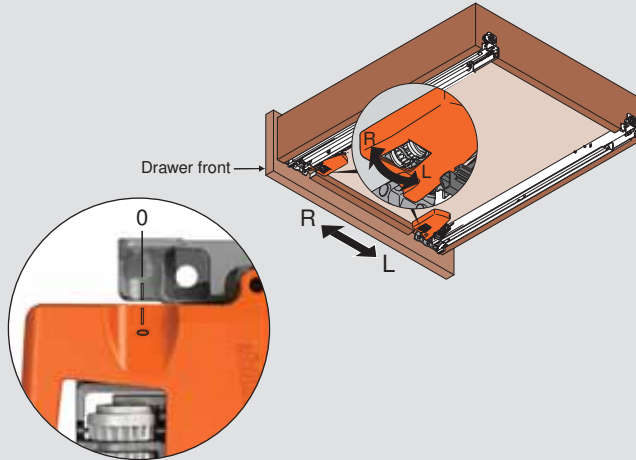


page 40

Front side-to-side adjustment

- 1 Rotate side-to-side adjustment left or right equally on both locking devices. Drawer front moves in the same direction as rotation.

T51.1901.xx with side-to-side adjustment

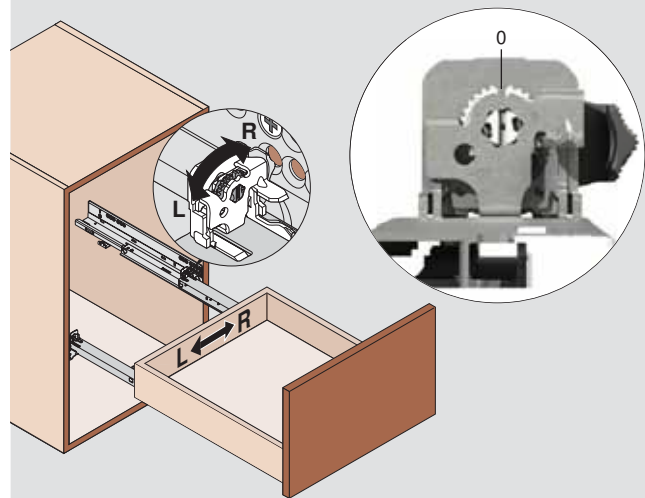


Maximum **1.5** (1/16") to left or right (tool-free)

NOTE: Not available on T51.x8xx locking devices

Rear side-to-side adjustment

- 2 After front side-to-side adjustment is made with the locking devices, rotate the rear side-to-side adjustment left or right to re-align the back of the drawer box with the front. Drawer back moves in the same direction as rotation.



Maximum **1.5** (1/16") to left or right (tool-free)

NOTE: The left rear hook is a different design and allows for drawer width tolerances

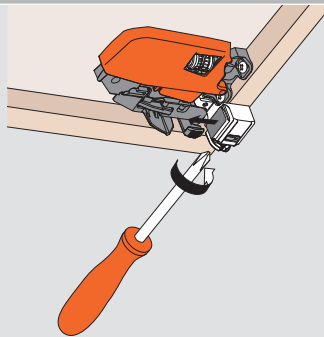
Depth adjustable locking device

Locking device

T51.1901.PS

with side-to-side, height and depth adjustment

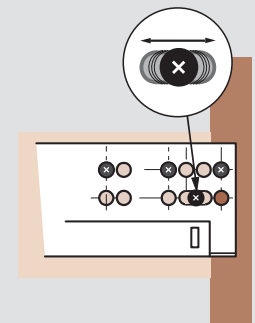
Turning the adjustment screw allows for up to **2.5** (3/32") out adjustment



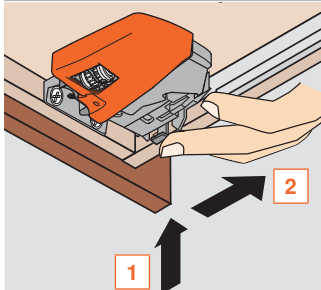
page 32

Depth adjustment on runner

TANDEM 563 and 569 runners feature elongated holes that allow ± 4.5 (3/16") depth adjustment



Height adjustment



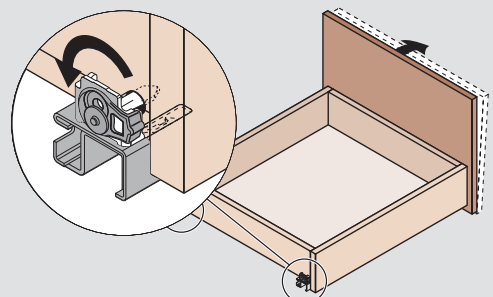
- 1 Press up on adjustment tab
- 2 Push toward back of drawer

Maximum **3** (1/8") rise of drawer front (tool-free)

NOTE: Height adjustment available on all TANDEM locking devices

Tilt adjustment

Rotate the tilt adjustment lever on the rear of each runner to tilt the top of the drawer front forward



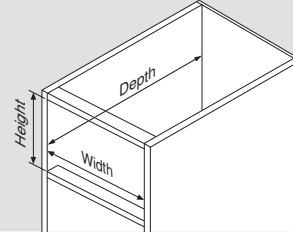
Maximum **5** (3/16") rise of drawer back (tool-free)

Step 1

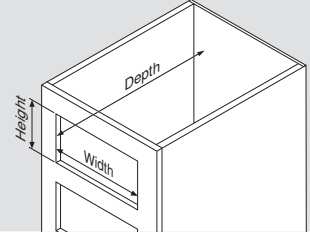
Measure cabinet opening

Cabinet opening measurements are needed to determine drawer box size.

Frameless cabinet



Frame cabinet



Step 2

Select TANDEM runners

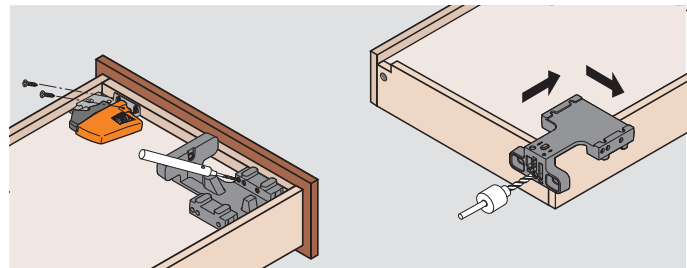
Choose the TANDEM runner that best fits your desired application, drawer side thickness, load capacity and cabinet depth. Then go to the corresponding catalog page for more specific information.

| Drawer length | Full extension | Full extension with BLUMOTION | | Heavy duty full extension with BLUMOTION | |
|-------------------------|--------------------------|-------------------------------|--------------------------|--|--------------------------|
| | Maximum drawer thickness | Maximum drawer thickness | Maximum drawer thickness | Maximum drawer thickness | Maximum drawer thickness |
| | 5/8" | 5/8" | 3/4" | 5/8" | 3/4" |
| 9" | | 563H | 563F | | |
| 12" | | | | | |
| 15" | | | | | |
| 18" | 562H | 563H and 563. | | 569H | 569F |
| 21" | | | | | |
| 24" | | | | 569. | 569A |
| 27" | | | | | |
| 30" | | | | | |
| Capacity static/dynamic | 100/75 lb | 100/90 lb* | | 150/135 lb* | |

Step 3

Preparing drawer boxes

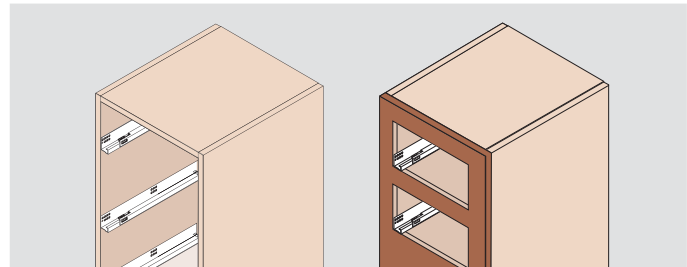
Build drawers according to the specifications given for the TANDEM runners you chose and the measurements determined in Step 1. Install appropriate locking devices and bore holes to accept rear hooks.



Step 4

Attach runners to cabinet

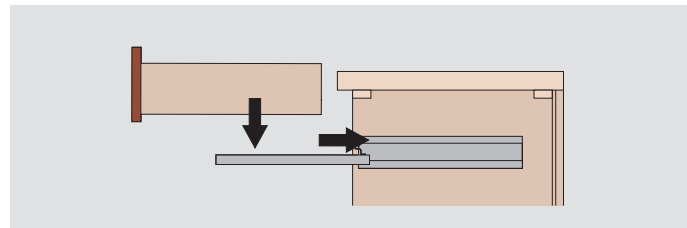
Using the mounting information given for the TANDEM runners you chose, mount the TANDEM runners in the cabinet.



Step 5

Insert drawers

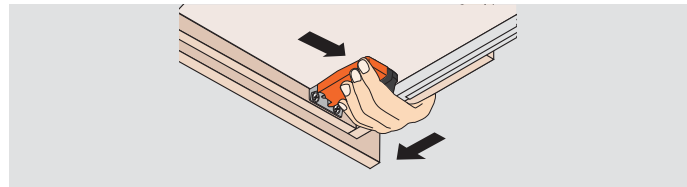
Extend the runners fully. Place the drawer on the runners and close. The locking devices automatically engage with the runners. Make adjustments if necessary.



Step 6

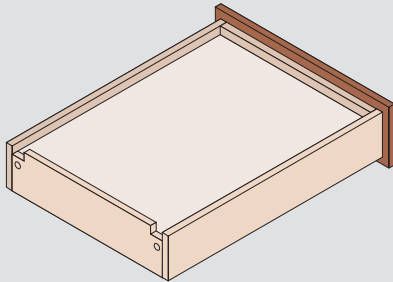
Drawer removal

Squeeze orange handles on locking devices and pull drawer straight out and up.



Rear Notching

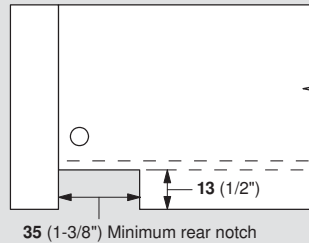
Dimensions



Drawers must be notched in the back to accommodate TANDEM runners

NOTE: TIP-ON for TANDEM plus requires 85 (3-11/32") notch

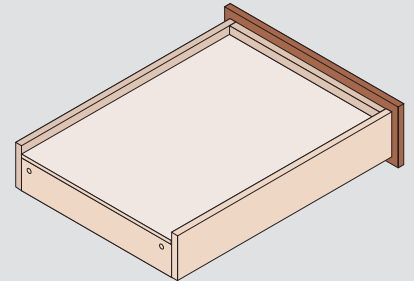
Rear view



The notches must be flush with the drawer sides and bottom

page 36

Option – no notching

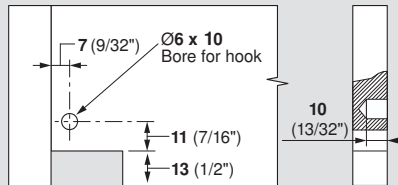


Make the back panel shorter and extend the drawer bottom to the back of the drawer

Rear Boring

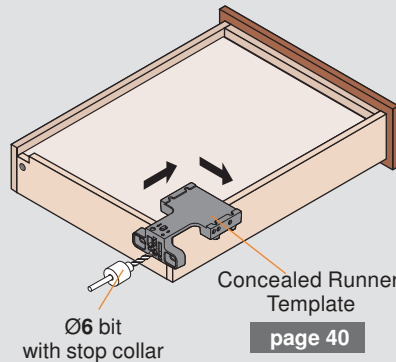
Dimensions

Rear view



Drawers require Ø6 holes bored on each side of the back panel to accept the hooks on the back of TANDEM runners

Boring



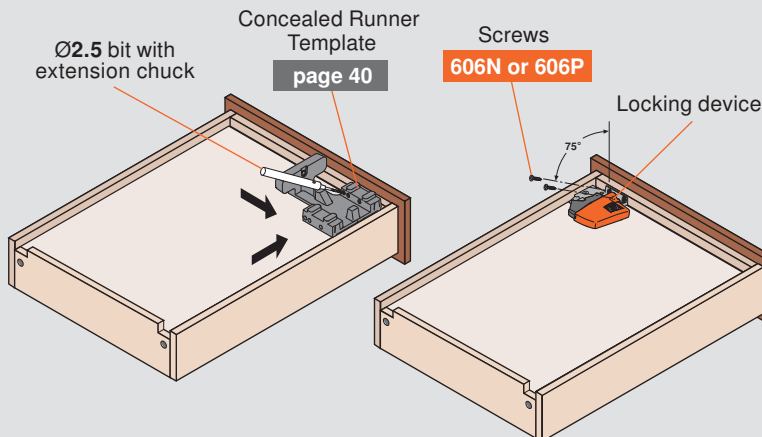
page 40

- 1 Place template over the drawer side
- 2 Position template so that the center rib rests against the inside face of the drawer side
- 3 Set stop collar on Ø6 bit so that it will bore 10 (13/32") deep
- 4 Hold template firmly and bore hole
- 5 Repeat on other side

NOTE: Using the T65.1600.01 Concealed Runner Template is highly recommended

Locking Devices

Installation



- 1 Position the Ø2.5 drill bit into the extension chuck so that it will bore 10 (13/32") deep
- 2 Place template into the front corner of the drawer
- 3 Bore two holes and repeat on other side
- 4 Attach locking devices with #6 x 5/8" deep thread wood screws (606N or 606P)

NOTE: The mounting screws must go in at a precise angle and the locking device must fit flush to the drawer bottom to ensure proper function of the complete drawer system

NOTE: Using the T65.1600.01 Concealed Runner Template is highly recommended

TANDEM plus BLUMOTION



TANDEM plus BLUMOTION 563.

Application



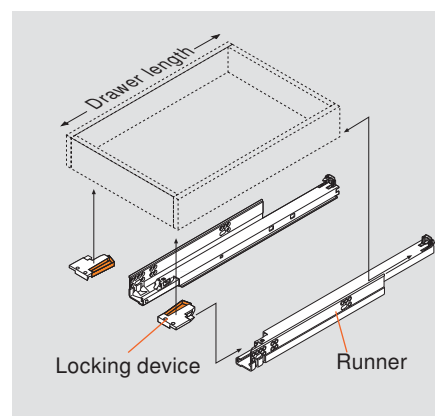
Features

- Four-dimensional adjustment
- Elongated holes for depth adjustment
- Bottom mount holes
- 100 lb static load capacity

Description

- Full extension concealed runners
- Frameless or blocked-out face frame cabinets
- BLUMOTION soft closing
- TANDEM smooth running action
- Available in 18" and 21" lengths
- 13 (1/2") to 16 (5/8") drawer thickness
- Made in the USA

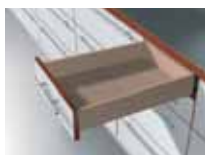
Basic Components



Other Applications



Inset drawer pg 22



Narrow drawer pg 24



Roll-out shelf pg 28



Bottom mount pg 29

Components

Runner set

One set required per drawer



| For overall cabinet depth | Drawer length | TANDEM plus BLUMOTION |
|-------------------------------|---------------|-----------------------|
| 610 (24") | 533 (21") | 563.5330B |
| 533 (21") | 457 (18") | 563.4570B |
| Wood screw for installation | | 606N or 606P |
| System screw for installation | | 662.1150.HG |

Standard locking device with side-to-side adjustment



- One right and one left required per drawer
- Captive right and self-aligning left device
- Self-adjusting drawer length tolerance
- Steel base with synthetic, spring-loaded release levers
- Minimum inside drawer width 170 (6-11/16")
- Height adjustment +3 (1/8")
- Side-to-side adjustment ± 1.5 (1/16")
- For use with 563/569 series runners only or other options see page 32

Part no.

Right locking device **T51.1901 R**

Installation Left locking device **T51.1901 L**

page 11 Installation screw **606N or 606P**

NOTE: For 563. series runners, rear brackets and sockets cannot be used. Cabinet sides must be blocked-out flush with the inside of the frame. See page 13.

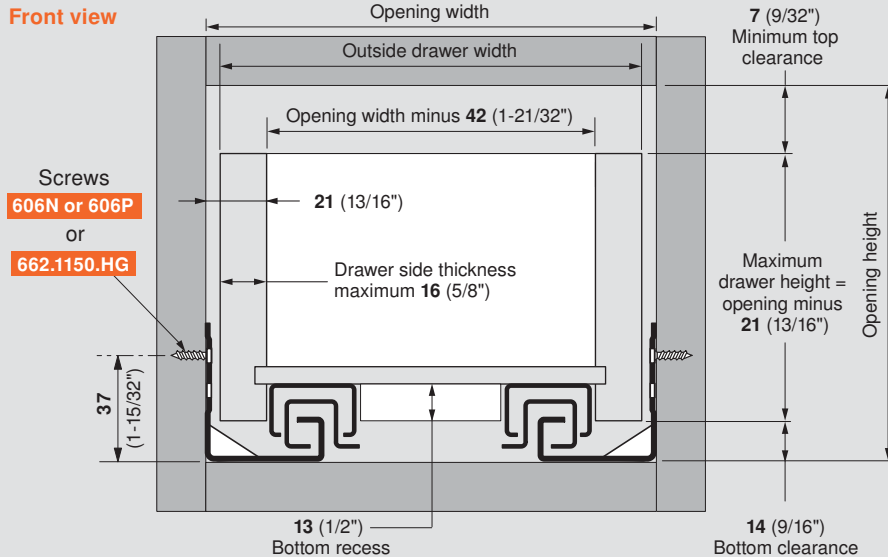
Drawer and Cabinet Specifications

| | |
|--------------------------|-----------|
| Maximum drawer thickness | 16 (5/8") |
| Lengths available | 18" - 21" |
| Static load capacity | 100 lb |

TANDEM plus BLUMOTION



Drawer box specifications



NOTE: Drawer side material thickness may vary. Accurate measurement of drawer side material thickness should be used when calculating outside drawer width using the table below. Inside drawer width **must** equal opening width minus 42 (1-21/32") for TANDEM to align and function optimally.

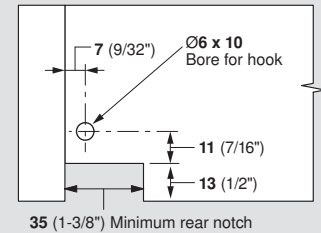
Calculating outside drawer width

| | | | | | |
|---------------------------|-------------|-------------|------------|-----------|-------------|
| For drawer side thickness | 16 (5/8") | 15 (19/32") | 14 (9/16") | 13 (1/2") | 12 (15/32") |
| Deduct from opening width | 10 (13/32") | 12 (15/32") | 14 (9/16") | 16 (5/8") | 18 (23/32") |

Example: For 21" opening width and a 5/8" thick drawer, 21" minus 13/32" = 20-19/32" drawer width

Drawer back preparation

Rear view



Runner comparison

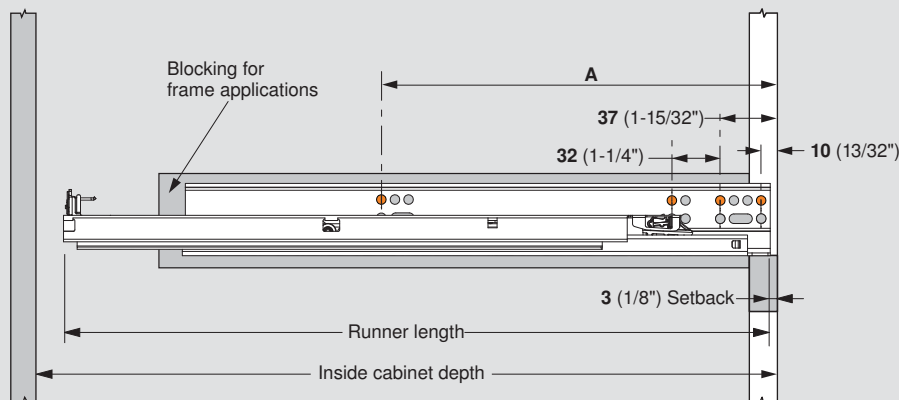
Side view



NOTE: Same hole pattern as the 563H

Runner mounting specifications

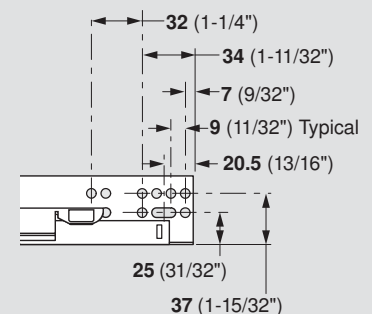
Side view



NOTE: The orange dots indicate fixing screw locations required to meet specified load ratings

| TANDEM plus BLUMOTION | Drawer length | Minimum inside cabinet depth | Runner length | Screw location |
|-----------------------|---------------|------------------------------|-----------------|----------------|
| | | | | A |
| 563.5330B | 533 (21") | 557 (21-15/16") | 548 (21-9/16") | 261 (10-9/32") |
| 563.4570B | 457 (18") | 480 (18-29/32") | 471 (18-17/32") | 261 (10-9/32") |

Runner close-up



NOTE: Elongated holes are for ± 4.5 (3/16") depth adjustment only. Additional screws must be used to secure the runner to the cabinet.

TANDEM plus BLUMOTION



TANDEM plus BLUMOTION 563H

Application



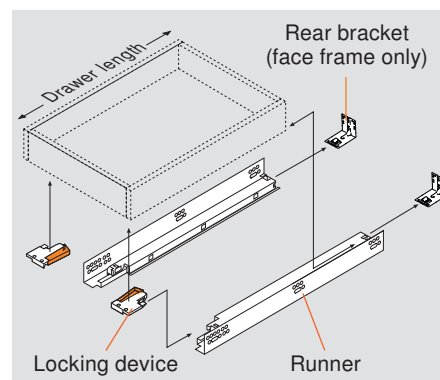
Features

- Four-dimensional adjustment
- Elongated holes for depth adjustment
- Bottom mount holes on 15", 18" and 21"
- 100 lb static load capacity

Description

- Full extension concealed runners
- Face frame or frameless cabinets
- BLUMOTION soft closing
- TANDEM smooth running action
- Available in 9" to 21" lengths
- 13 (1/2") to 16 (5/8") drawer thickness
- Made in the USA

Basic Components



Other Applications



Inset drawer pg 22



Narrow drawer pg 24



Roll-out shelf pg 28



Bottom mount pg 29

Components

Runner set

One set required per drawer



| For overall cabinet depth | Drawer length | TANDEM plus BLUMOTION |
|-------------------------------|---------------|-----------------------|
| 610 (24") | 533 (21") | 563H5330B |
| 533 (21") | 457 (18") | 563H4570B |
| 457 (18") | 381 (15") | 563H3810B |
| 381 (15") | 305 (12") | 563H3050B |
| 305 (12") | 229 (9") | 563H2290B10 |
| Wood screw for installation | | 606N or 606P |
| System screw for installation | | 662.1150.HG |

Standard locking device with side-to-side adjustment



- One right and one left required per drawer
- Captive right and self-aligning left device
- Self-adjusting drawer length tolerance
- Steel base with synthetic, spring-loaded release levers
- Minimum inside drawer width 170 (6-11/16")
- Height adjustment +3 (1/8")
- Side-to-side adjustment ± 1.5 (1/16")
- For use with 563/569 series runners only
- For other options see page 32

Part no.

Right locking device **T51.1901 R**

Installation Left locking device **T51.1901 L**

page 11 Installation screw **606N or 606P**

Rear mounting bracket for frame cabinets



For use when installing TANDEM runners in face frame cabinets. Not necessary for frameless cabinet installation.

- Two required per drawer
- Depth and lateral self-alignment
- Zinc-coated steel
- For 9" TANDEM rear attachment options see page 35

Part no.

Non-handed bracket **295.3750.02**

Installation screw **606N or 606P**

Drawer and Cabinet Specifications

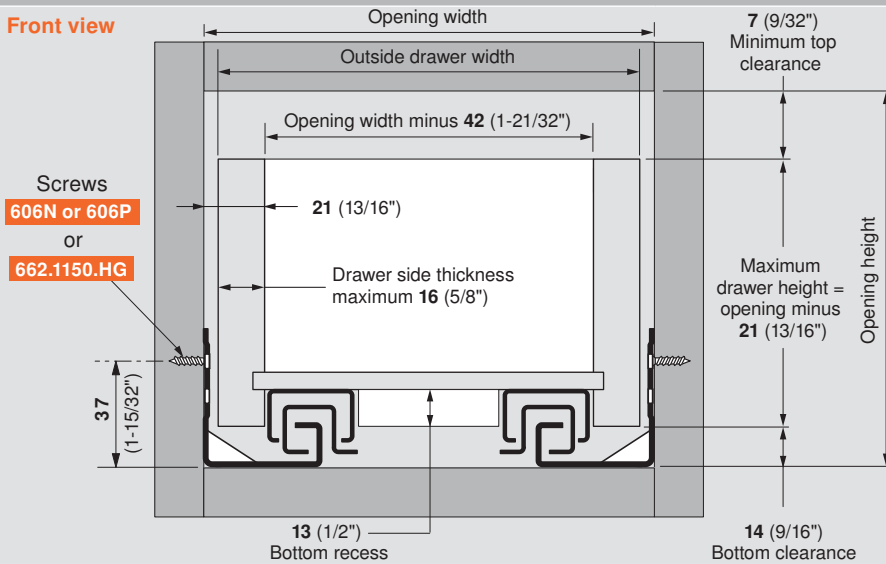
| | |
|--------------------------|-----------|
| Maximum drawer thickness | 16 (5/8") |
| Lengths available | 9" - 21" |
| Static load capacity | 100 lb |

TANDEM plus BLUMOTION



Drawer box specifications

Front view



NOTE: Drawer side material thickness may vary. Accurate measurement of drawer side material thickness should be used when calculating outside drawer width using the table below. Inside drawer width **must** equal opening width minus 42 (1-21/32") for TANDEM to align and function optimally.

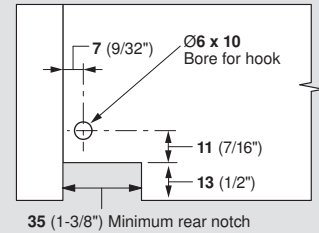
Calculating outside drawer width

| | | | | | |
|---------------------------|-------------|-------------|------------|-----------|-------------|
| For drawer side thickness | 16 (5/8") | 15 (19/32") | 14 (9/16") | 13 (1/2") | 12 (15/32") |
| Deduct from opening width | 10 (13/32") | 12 (15/32") | 14 (9/16") | 16 (5/8") | 18 (23/32") |

Example: For 21" opening width and a 5/8" thick drawer, 21" minus 13/32" = 20-19/32" drawer width

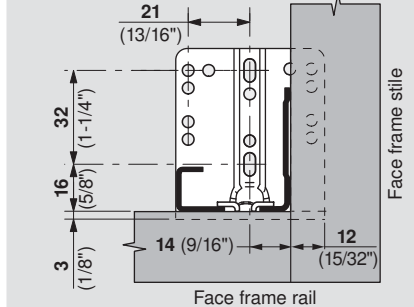
Drawer back preparation

Rear view



Rear mounting bracket

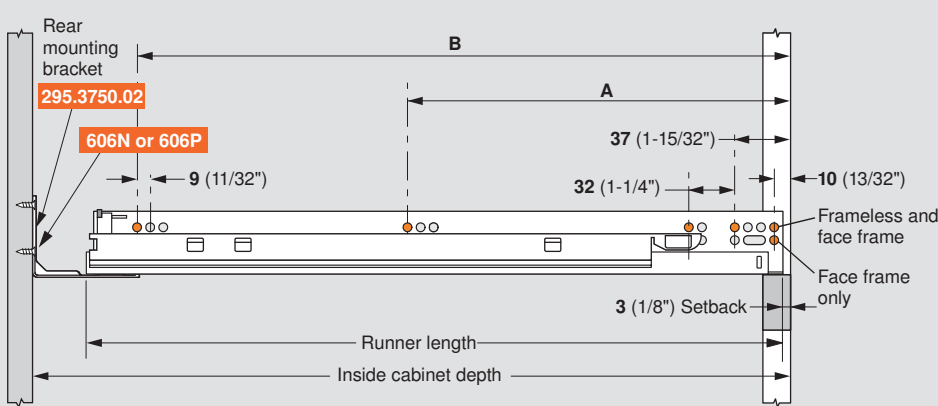
Front view



NOTE: For frame applications, use a minimum of three screws per bracket

Runner mounting specifications

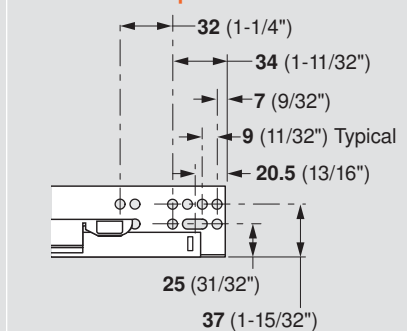
Side view



NOTE: The orange dots indicate fixing screw locations required to meet specified load ratings

| TANDEM plus BLUMOTION | Drawer length | Inside cabinet depth with rear attachment | | Runner length | Screw locations for frameless cabinets | |
|-----------------------|---------------|---|-----------------|-----------------|--|-----------------|
| | | Maximum | Minimum | | A | B |
| 563H5330B | 533 (21") | 599 (23-19/32") | 557 (21-15/16") | 548 (21-9/16") | 261 (10-9/32") | 517 (20-11/32") |
| 563H4570B | 457 (18") | 522 (20-9/16") | 480 (18-29/32") | 471 (18-17/32") | 261 (10-9/32") | 453 (17-27/32") |
| 563H3810B | 381 (15") | 446 (17-9/16") | 404 (15-29/32") | 395 (15-9/16") | 165 (6-1/2") | 357 (14-1/16") |
| 563H3050B | 305 (12") | 370 (14-9/16") | 328 (12-29/32") | 319 (12-9/16") | 165 (6-1/2") | 261 (10-9/32") |
| 563H2290B10 | 229 (9") | 299 (11-25/32") | 266 (10-15/32") | 259 (10-3/16") | 133 (5-1/4") | 229 (9") |

Runner close-up



NOTE: Elongated holes are for ±4.5 (3/16") depth adjustment only. Additional screws must be used to secure the runner to the cabinet.

TANDEM plus BLUMOTION



TANDEM plus BLUMOTION 563F

Application



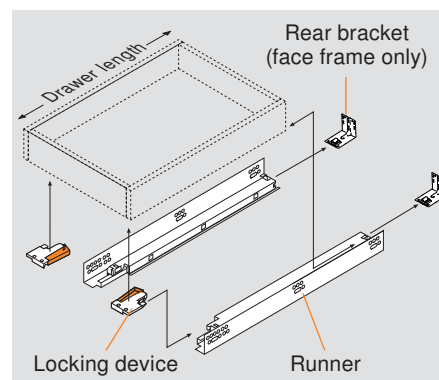
Features

- Four-dimensional adjustment
- Elongated holes for depth adjustment
- Bottom mount holes on 15", 18" and 21"
- 100 lb static load capacity

Description

- Full extension concealed runners
- Face frame or frameless cabinets
- BLUMOTION soft closing
- TANDEM smooth running action
- Available in 9" to 21" lengths
- 16 (5/8") to 19 (3/4") drawer thickness
- Made in the USA

Basic Components



Other Applications



Inset drawer pg 22



Narrow drawer pg 24



Roll-out shelf pg 28



Bottom mount pg 29

Components

Runner set

One set required per drawer



| For overall cabinet depth | Drawer length | TANDEM plus BLUMOTION |
|-------------------------------|---------------|-----------------------|
| 610 (24") | 533 (21") | 563F5330B |
| 533 (21") | 457 (18") | 563F4570B |
| 457 (18") | 381 (15") | 563F3810B |
| 381 (15") | 305 (12") | 563F3050B |
| 305 (12") | 229 (9") | 563F2290B10 |
| Wood screw for installation | | 606N or 606P |
| System screw for installation | | 662.1150.HG |

Standard locking device with side-to-side adjustment



- One right and one left required per drawer
- Captive right and self-aligning left device
- Self-adjusting drawer length tolerance
- Steel base with synthetic, spring-loaded release levers
- Minimum inside drawer width 170 (6-11/16")
- Height adjustment +3 (1/8")
- Side-to-side adjustment ± 1.5 (1/16")
- For use with 563/569 series runners only
- For other options see page 32

Part no.

Right locking device **T51.1901 R**

Installation Left locking device **T51.1901 L**

page 11 Installation screw **606N or 606P**

Rear mounting bracket for frame cabinets



For use when installing TANDEM runners in face frame cabinets. Not necessary for frameless cabinet installation.

- Two required per drawer
- Depth and lateral self-alignment
- Zinc-coated steel
- For 9" TANDEM rear attachment options see page 35

Part no.

Non-handed bracket **295.3750.02**

Installation screw **606N or 606P**

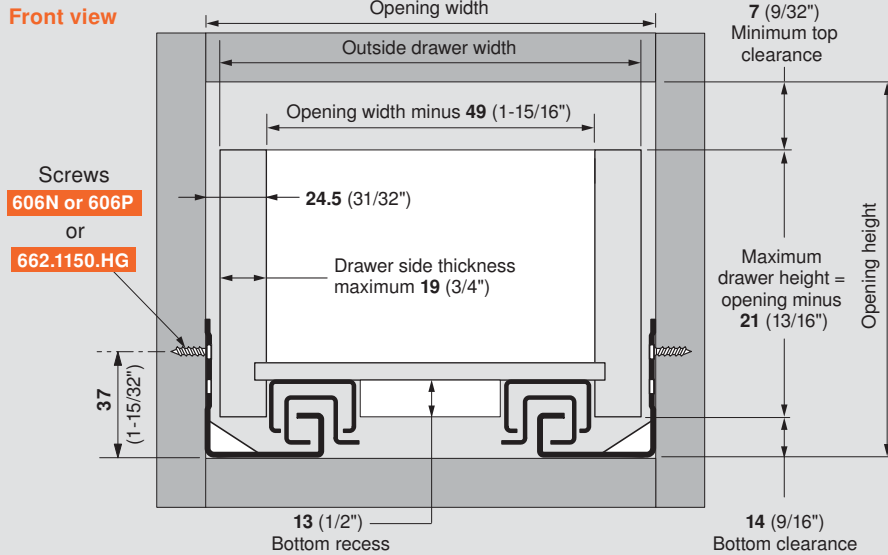
Drawer and Cabinet Specifications

| | |
|--------------------------|-----------|
| Maximum drawer thickness | 19 (3/4") |
| Lengths available | 9" - 21" |
| Static load capacity | 100 lb |

TANDEM plus BLUMOTION



Drawer box specifications



NOTE: Drawer side material thickness may vary. Accurate measurement of drawer side material thickness should be used when calculating outside drawer width using the table below. Inside drawer width **must** equal opening width minus 49 (1-15/16") for TANDEM to align and function optimally.

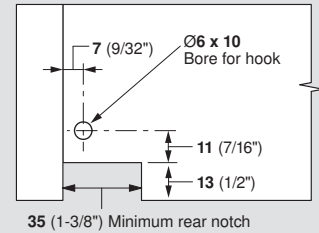
Calculating outside drawer width

| | | | | | |
|---------------------------|------------|-------------|-------------|-------------|-------------|
| For drawer side thickness | 19 (3/4") | 18 (23/32") | 17 (21/32") | 16 (5/8") | 15 (19/32") |
| Deduct from opening width | 11 (7/16") | 13 (1/2") | 15 (19/32") | 17 (21/32") | 19 (3/4") |

Example: For 21" opening width and a 3/4" thick drawer, 21" minus 7/16" = 20-9/16" drawer width

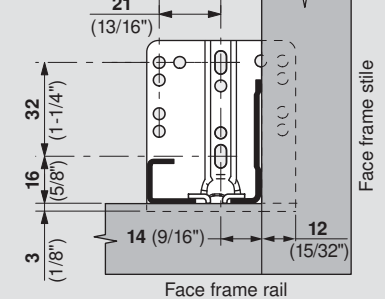
Drawer back preparation

Rear view



Rear mounting bracket

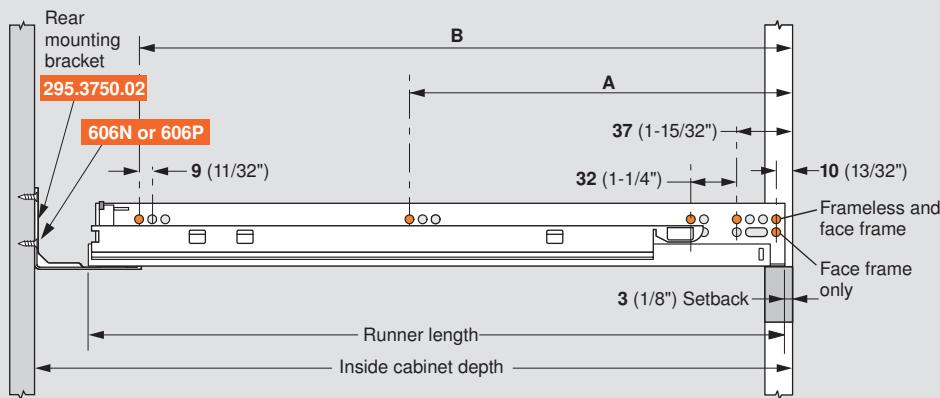
Front view



NOTE: For frame applications, use a minimum of three screws per bracket

Runner mounting specifications

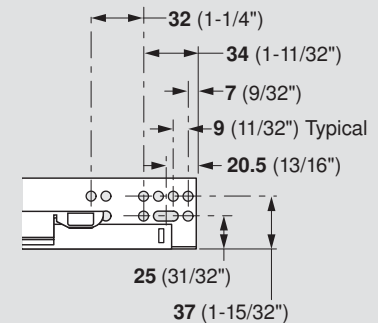
Side view



NOTE: The orange dots indicate fixing screw locations required to meet specified load ratings

| TANDEM plus BLUMOTION | Drawer length | Inside cabinet depth with rear attachment | | Runner length | Screw locations for frameless cabinets | |
|-----------------------|---------------|---|-----------------|-----------------|--|-----------------|
| | | Maximum | Minimum | | A | B |
| 563F5330B | 533 (21") | 599 (23-19/32") | 557 (21-15/16") | 548 (21-9/16") | 261 (10-9/32") | 517 (20-11/32") |
| 563F4570B | 457 (18") | 522 (20-9/16") | 480 (18-29/32") | 471 (18-17/32") | 261 (10-9/32") | 453 (17-27/32") |
| 563F3810B | 381 (15") | 446 (17-9/16") | 404 (15-29/32") | 395 (15-9/16") | 165 (6-1/2") | 357 (14-1/16") |
| 563F3050B | 305 (12") | 370 (14-9/16") | 328 (12-29/32") | 319 (12-9/16") | 165 (6-1/2") | 261 (10-9/32") |
| 563F2290B10 | 229 (9") | 299 (11-25/32") | 266 (10-15/32") | 259 (10-3/16") | 133 (5-1/4") | 229 (9") |

Runner close-up



NOTE: Elongated holes are for ±4.5 (3/16") depth adjustment only. Additional screws must be used to secure the runner to the cabinet.

TANDEM plus BLUMOTION



TANDEM plus BLUMOTION 569H/569. Heavy Duty

Application



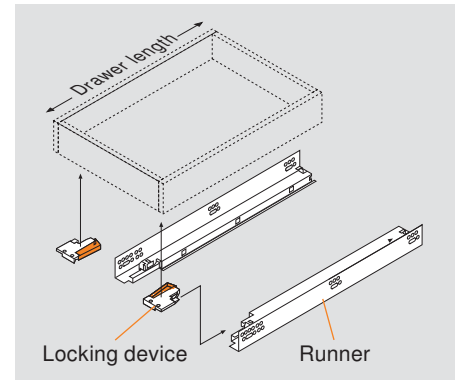
Features

- Four-dimensional adjustment
- Elongated holes for depth adjustment
- 150 lb static load capacity

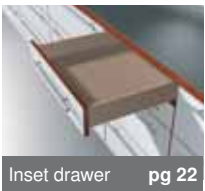
Description

- Full extension concealed runners
- Frameless or blocked-out face frame cabinets
- BLUMOTION soft closing
- TANDEM smooth running action
- Available in 18" to 30" lengths
- 13 (1/2") to 16 (5/8") drawer thickness

Basic Components



Other Applications



Inset drawer pg 22



SPACE CORNER pg 30

Components

Runner set

One set required per drawer



| For overall cabinet depth | Drawer length | TANDEM plus BLUMOTION |
|-------------------------------|---------------|-----------------------|
| 838 (33") | 762 (30") | 569.7620B |
| 762 (30") | 686 (27") | 569.6860B |
| 686 (27") | 610 (24") | 569.6100B |
| 610 (24") | 533 (21") | 569H5330B |
| 533 (21") | 457 (18") | 569H4570B |
| Wood screw for installation | | 606N or 606P |
| System screw for installation | | 662.1150.HG |

Standard locking device with side-to-side adjustment



- One right and one left required per drawer
- Captive right and self-aligning left device
- Self-adjusting drawer length tolerance
- Steel base with synthetic, spring-loaded release levers
- Minimum inside drawer width 170 (6-11/16")
- Height adjustment +3 (1/8")
- Side-to-side adjustment ± 1.5 (1/16")
- For use with 563/569 series runners only
- For other options see page 32

Part no.

Right locking device **T51.1901 R**

Installation Left locking device **T51.1901 L**

page 11 Installation screw **606N or 606P**

NOTE: For heavy duty applications, rear brackets and sockets cannot be used. Cabinet sides must be blocked-out flush with the inside of the frame. See page 19.

Drawer and Cabinet Specifications

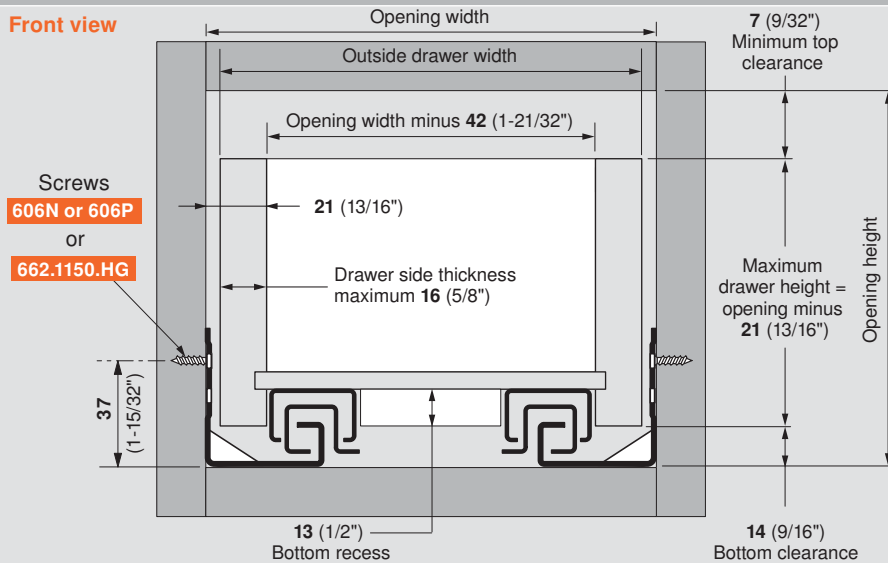
| | |
|--------------------------|-----------|
| Maximum drawer thickness | 16 (5/8") |
| Lengths available | 18" - 30" |
| Static load capacity | 150 lb |

TANDEM plus BLUMOTION



Drawer box specifications

Front view



NOTE: Drawer side material thickness may vary. Accurate measurement of drawer side material thickness should be used when calculating outside drawer width using the table below. Inside drawer width **must** equal opening width minus 42 (1-21/32") for TANDEM to align and function optimally.

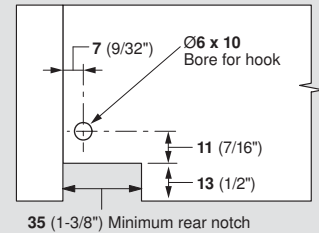
Calculating outside drawer width

| | | | | | |
|---------------------------|-------------|-------------|------------|-----------|-------------|
| For drawer side thickness | 16 (5/8") | 15 (19/32") | 14 (9/16") | 13 (1/2") | 12 (15/32") |
| Deduct from opening width | 10 (13/32") | 12 (15/32") | 14 (9/16") | 16 (5/8") | 18 (23/32") |

Example: For 21" opening width and a 5/8" thick drawer, 21" minus 13/32" = 20-19/32" drawer width

Drawer back preparation

Rear view



Runner comparison

Side view

569H

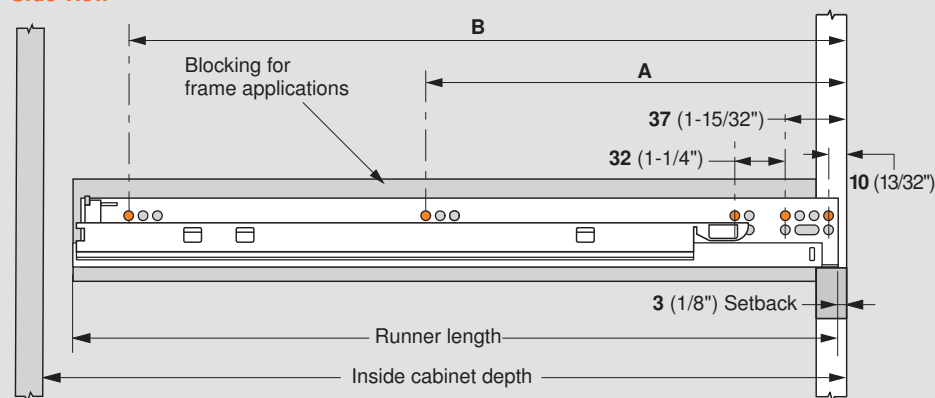


569.



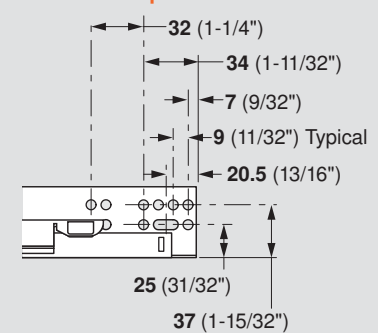
Runner mounting specifications

Side view



NOTE: The orange dots indicate fixing screw locations required to meet specified load ratings

Runner close-up



NOTE: Elongated holes are for ±4.5 (3/16") depth adjustment only. Additional screws must be used to secure the runner to the cabinet.

| TANDEM plus BLUMOTION | Drawer length | Minimum inside cabinet depth | Runner length | Screw locations for frameless cabinets | |
|-----------------------|---------------|------------------------------|-----------------|--|-----------------|
| | | | | A | B |
| 569.7620B | 762 (30") | 786 (30-15/16") | 777 (30-19/32") | 261 (10-9/32") | 389 (15-5/16") |
| 569.6860B | 686 (27") | 709 (27-29/32") | 700 (27-9/16") | 261 (10-9/32") | 389 (15-5/16") |
| 569.6100B | 610 (24") | 634 (24-31/32") | 625 (24-19/32") | 261 (10-9/32") | 389 (15-5/16") |
| 569H5330B | 533 (21") | 557 (21-15/16") | 548 (21-9/16") | 261 (10-9/32") | 517 (20-11/32") |
| 569H4570B | 457 (18") | 480 (18-29/32") | 471 (18-17/32") | 261 (10-9/32") | 453 (17-27/32") |

TANDEM plus BLUMOTION



TANDEM plus BLUMOTION 569F/569A Heavy Duty

Application



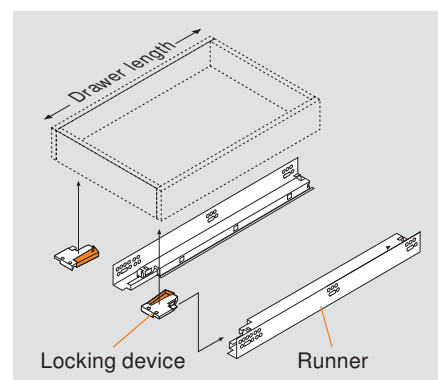
Features

- Four-dimensional adjustment
- Elongated holes for depth adjustment
- 150 lb static load capacity

Description

- Full extension concealed runners
- Frameless or blocked-out face frame cabinets
- BLUMOTION soft closing
- TANDEM smooth running action
- Available in 18" to 30" lengths
- 16 (5/8") to 19 (3/4") drawer thickness

Basic Components



Other Applications



Inset drawer

pg 22



SPACE CORNER

pg 30

Components

Runner set

One set required per drawer



| For overall cabinet depth | Drawer length | TANDEM plus BLUMOTION |
|-------------------------------|---------------|-----------------------|
| 838 (33") | 762 (30") | 569A7620B |
| 762 (30") | 686 (27") | 569A6860B |
| 686 (27") | 610 (24") | 569A6100B |
| 610 (24") | 533 (21") | 569F5330B |
| 533 (21") | 457 (18") | 569F4570B |
| Wood screw for installation | | 606N or 606P |
| System screw for installation | | 662.1150.HG |

Standard locking device with side-to-side adjustment



- One right and one left required per drawer
- Captive right and self-aligning left device
- Self-adjusting drawer length tolerance
- Steel base with synthetic, spring-loaded release levers
- Minimum inside drawer width 170 (6-11/16")
- Height adjustment +3 (1/8")
- Side-to-side adjustment ± 1.5 (1/16")
- For use with 563/569 series runners only
- For other options see page 32

Part no.

Right locking device **T51.1901 R**

Installation Left locking device **T51.1901 L**

page 11 Installation screw **606N or 606P**

NOTE: For heavy duty applications, rear brackets and sockets cannot be used. Cabinet sides must be blocked-out flush with the inside of the frame. See page 21.

Drawer and Cabinet Specifications

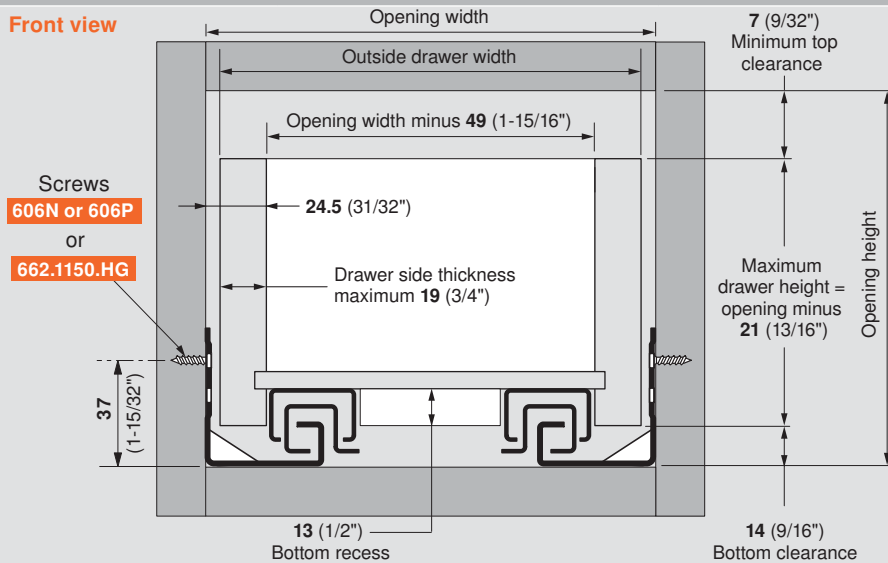
| | |
|--------------------------|-----------|
| Maximum drawer thickness | 19 (3/4") |
| Lengths available | 18" - 30" |
| Static load capacity | 150 lb |

TANDEM plus BLUMOTION



Drawer box specifications

Front view



NOTE: Drawer side material thickness may vary. Accurate measurement of drawer side material thickness should be used when calculating outside drawer width using the table below. Inside drawer width **must** equal opening width minus 49 (1-15/16") for TANDEM to align and function optimally.

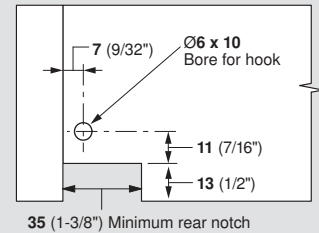
Calculating outside drawer width

| | | | | | |
|---------------------------|------------|-------------|-------------|-------------|-------------|
| For drawer side thickness | 19 (3/4") | 18 (23/32") | 17 (21/32") | 16 (5/8") | 15 (19/32") |
| Deduct from opening width | 11 (7/16") | 13 (1/2") | 15 (19/32") | 17 (21/32") | 19 (3/4") |

Example: For 21" opening width and a 3/4" thick drawer, 21" minus 7/16" = 20-9/16" drawer width

Drawer back preparation

Rear view



Runner comparison

Side view

569F

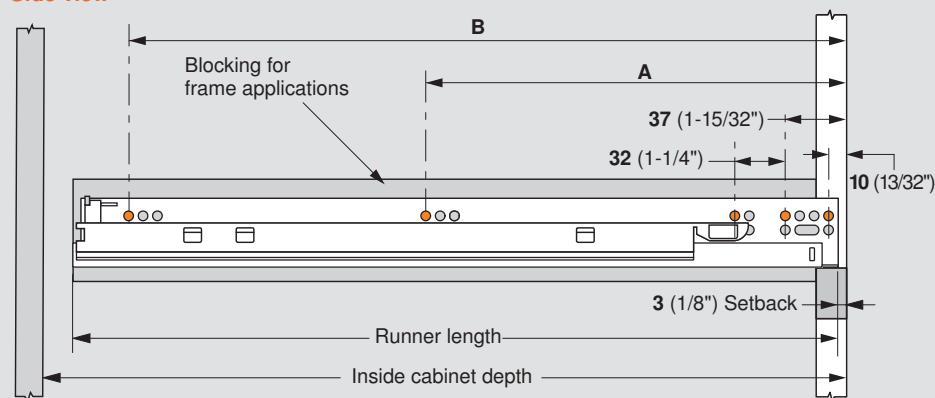


569A



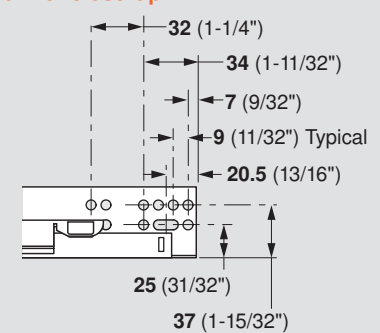
Runner mounting specifications

Side view



NOTE: The orange dots indicate fixing screw locations required to meet specified load ratings

Runner close-up



NOTE: Elongated holes are for ±4.5 (3/16") depth adjustment only. Additional screws must be used to secure the runner to the cabinet.

| TANDEM plus BLUMOTION | Drawer length | Minimum inside cabinet depth | Runner length | Screw locations for frameless cabinets | |
|-----------------------|---------------|------------------------------|-----------------|--|-----------------|
| | | | | A | B |
| 569A7620B | 762 (30") | 786 (30-15/16") | 777 (30-19/32") | 261 (10-9/32") | 389 (15-5/16") |
| 569A6860B | 686 (27") | 709 (27-29/32") | 700 (27-9/16") | 261 (10-9/32") | 389 (15-5/16") |
| 569A6100B | 610 (24") | 634 (24-31/32") | 625 (24-19/32") | 261 (10-9/32") | 389 (15-5/16") |
| 569F5330B | 533 (21") | 557 (21-15/16") | 548 (21-9/16") | 261 (10-9/32") | 517 (20-11/32") |
| 569F4570B | 457 (18") | 480 (18-29/32") | 471 (18-17/32") | 261 (10-9/32") | 453 (17-27/32") |

TANDEM plus BLUMOTION



Inset Drawer

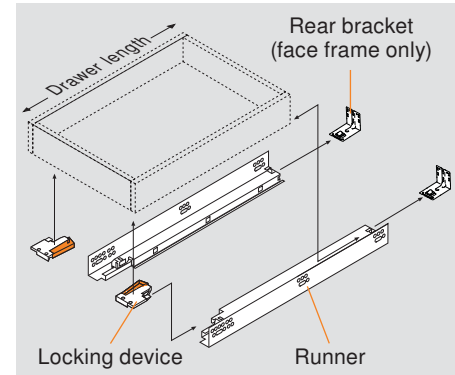
Application



Description

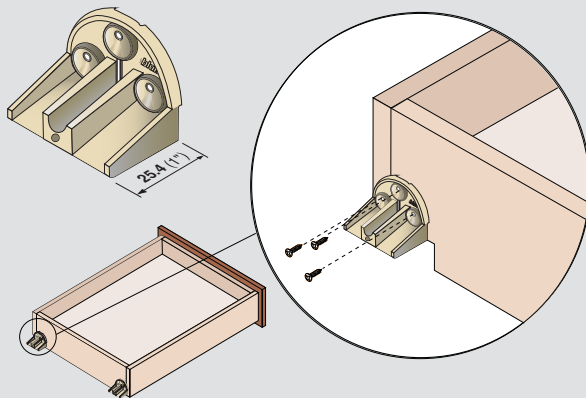
- Uses the same 563 or 569 series runner
- Requires increased setback of the runner
- Frame applications require blocking-out behind the face frame

Basic Components



Optional inset spacer for SERVO-DRIVE

For applications where there would not be enough space behind the drawer box to add SERVO-DRIVE due to cabinet construction, plumbing, etc.



- Two required per drawer
- Drawer box is built **25.4 (1\")** shorter in length than TANDEM specifications
- These spacers make up the difference between the drawer box and rear hook and provide additional space for installing SERVO-DRIVE
- SERVO-DRIVE boring locations and minimum inside cabinet depths move towards the cabinet face by **25.4 (1\")**

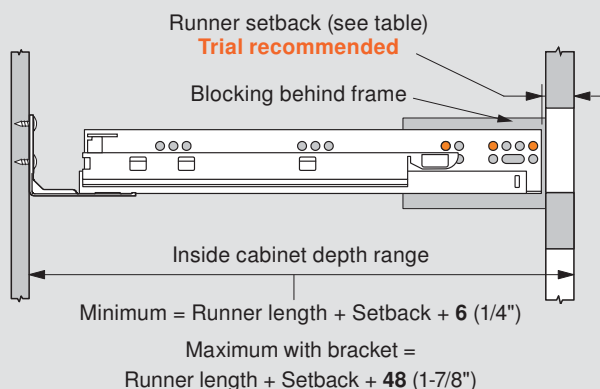
Part no.

| | |
|--------------------|---------------------|
| Inset spacer | T59.A5P0S |
| Installation screw | 606N or 606P |

Specifications

Partial block-out

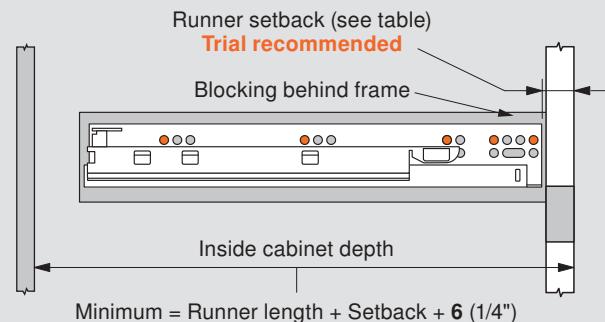
Side view



NOTE: Only for 563 H and F series runners

Complete block-out

Side view



NOTE: Required for 563. and 569 series runners

Runner Setback Specifications

TANDEM plus BLUMOTION



Runner setback when using depth adjustable locking device (T51.1901.PS)

| 563/569 H./ | | Runner setback | | | | 563/569 F/A | | Runner setback | | | |
|------------------------|-----------|----------------|--------------|--------------|--|------------------------|-----------|----------------|--------------|--------------|--------------|
| Sub-front thickness | 13 (1/2") | 20 (25/32") | 23 (29/32") | 26 (1-1/32") | | Sub-front thickness | 13 (1/2") | 17 (21/32") | 20 (25/32") | 23 (29/32") | 23 (29/32") |
| | 16 (5/8") | 23 (29/32") | 26 (1-1/32") | 29 (1-5/32") | | | 16 (5/8") | 20 (25/32") | 23 (29/32") | 26 (1-1/32") | 26 (1-1/32") |
| | 19 (3/4") | 26 (1-1/32") | 29 (1-5/32") | 32 (1-1/4") | | | 19 (3/4") | 23 (29/32") | 26 (1-1/32") | 29 (1-5/32") | 29 (1-5/32") |
| | | 16 (5/8") | 19 (3/4") | 22 (7/8") | | | | 16 (5/8") | 19 (3/4") | 22 (7/8") | |
| Drawer front thickness | | | | | | Drawer front thickness | | | | | |

- Setbacks in this table recess the face of the drawer front inside of the cabinet 1 (1/32")
- The depth adjustment can then be used to move the drawer front out to its desired position, 2.5 (3/32") out adjustment only


Calculating runner setback

563/569 H./ (sub-front thickness + drawer front thickness minus 9 (11/32") = runner setback)

563/569 F/A (sub-front thickness + drawer front thickness minus 12 (15/32") = runner setback)

NOTE: For mounting hole position, add 7 (9/32") to runner setback

Runner setback when using all other locking devices



| 563/569 H./ | Runner setback | | | | 563/569 F/A | Runner setback | | | |
|------------------------|----------------|---------------|----------------|----------------|------------------------|----------------|---------------|---------------|----------------|
| Sub-front thickness | 13 (1/2") | 17.5 (11/16") | 20.5 (13/16") | 23.5 (15/16") | Sub-front thickness | 13 (1/2") | 14.5 (9/16") | 17.5 (11/16") | 20.5 (13/16") |
| | 16 (5/8") | 20.5 (13/16") | 23.5 (15/16") | 26.5 (1-1/32") | | 16 (5/8") | 17.5 (11/16") | 20.5 (13/16") | 23.5 (15/16") |
| | 19 (3/4") | 23.5 (15/16") | 26.5 (1-1/32") | 29.5 (1-5/32") | | 19 (3/4") | 20.5 (13/16") | 23.5 (15/16") | 26.5 (1-1/32") |
| | | 16 (5/8") | 19 (3/4") | 22 (7/8") | | | 16 (5/8") | 19 (3/4") | 22 (7/8") |
| Drawer front thickness | | | | | Drawer front thickness | | | | |

Setbacks in this table set the face of the drawer front flush with the face of the cabinet

If a depth adjustable locking device is needed, please see the locking device and table above

Calculating runner setback

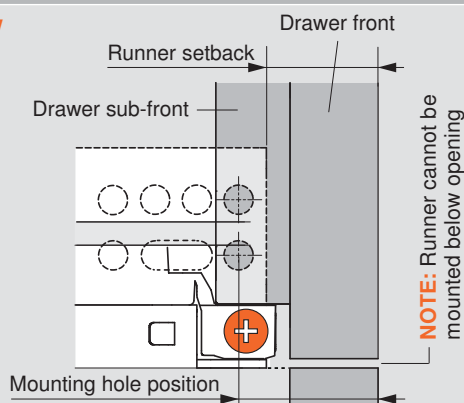
563/569 H./ (sub-front thickness + drawer front thickness minus 11.5 (7/16") = runner setback)

563/569 F/A (sub-front thickness + drawer front thickness minus 14.5 (9/16") = runner setback)

NOTE: For mounting hole position, add 7 (9/32") to runner setback

Setback information

Side view



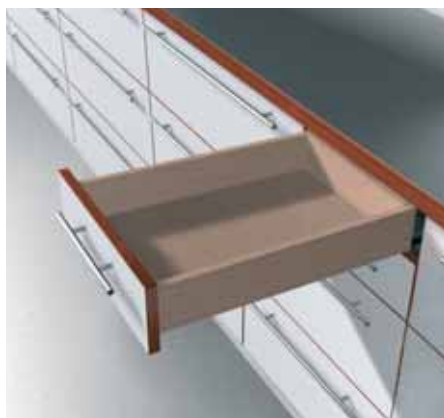
NOTE: For mounting hole position add 7 (9/32") to runner setback

TANDEM plus BLUMOTION



Narrow Drawer

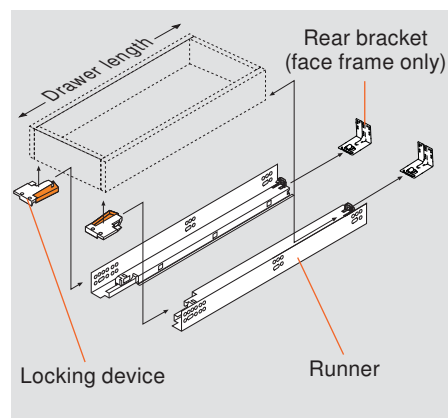
Application



Description

- For inside drawer widths of **95** (3-3/4") to **124** (4-7/8")
- Special narrow locking device required
- Maximum dynamic load rating for narrow drawer locking device is 25 lb
- Minimum **16** (5/8") sub-front thickness

Basic Components



Components

Runner set

One set required per drawer



Narrow drawer applications are possible with any TANDEM plus BLUMOTION runner. See the installation instructions for the runner used.

TANDEM plus BLUMOTION

| | |
|-------------|---------|
| 563. series | page 12 |
| 563H series | page 14 |
| 563F series | page 16 |

Narrow drawer locking device



- One right and one left required per drawer
- For use with narrow drawers
- Maximum dynamic load capacity 25 lb
- Self-adjusting drawer length tolerance
- Vertical mount, two-piece nylon
- Minimum inside drawer width **95** (3-3/4")
- Height adjustment **+3** (1/8")
- Minimum sub-front thickness **16** (5/8")
- Designed for **13** (1/2") drawer bottom recess
- For use with 563/569 series runners only

Part no.

Right locking device **T51.0801.20 R**

Installation Left locking device **T51.0801.20 L**

page 25 Installation screw **606N or 606P**

Rear mounting bracket for frame cabinets



For use when installing TANDEM runners in face frame cabinets. Not necessary for frameless cabinet installation.

- Two required per drawer
- Depth and lateral self-alignment
- Zinc-coated steel
- For 9" TANDEM rear attachment options, see page 35

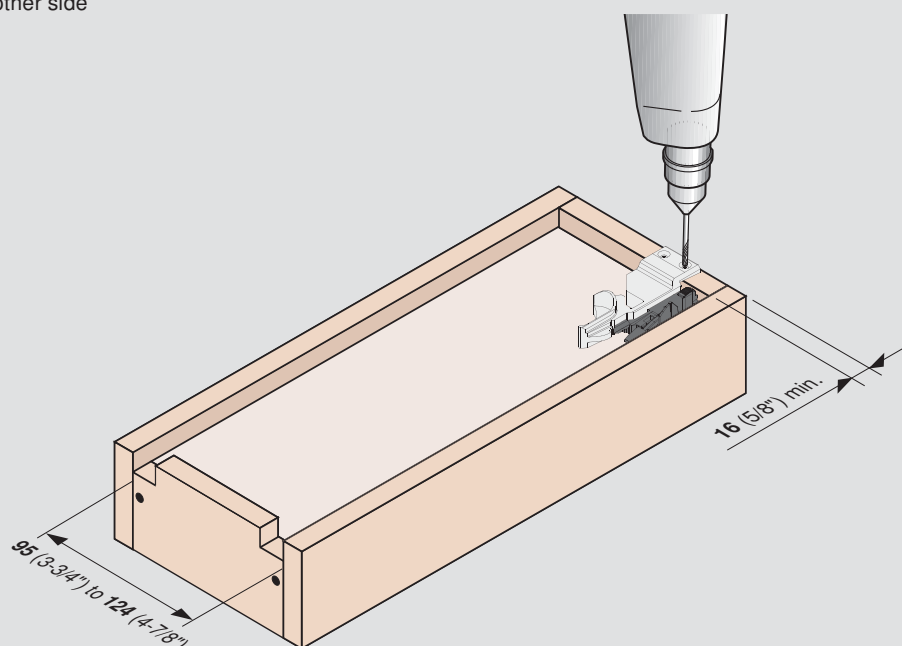
Part no.

Non-handed bracket **295.3750.02**

Installation screw **606N or 606P**

Attach locking devices

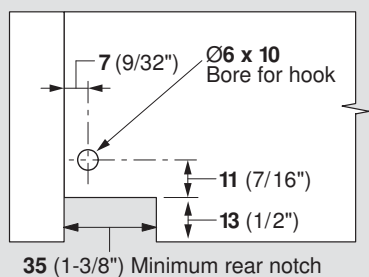
- 1 Position locking device in front corner of the drawer
- 2 Pre-bore locking device mounting screw holes with $\varnothing 2.5$ piloting bit
- 3 Attach with two 606N or 606P screws
- 4 Repeat on the other side



NOTE: A minimum of 16 (5/8") sub-front thickness is required for mounting the narrow drawer locking device

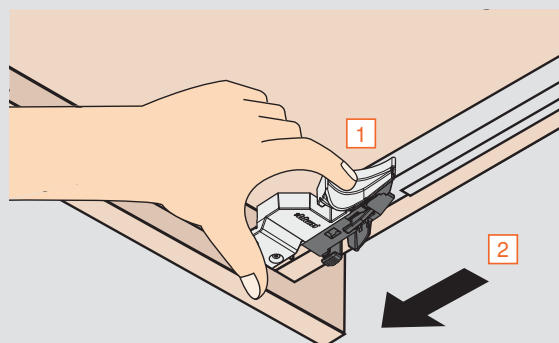
Drawer back preparation

Rear view



Drawer removal

- 1 Squeeze release levers on locking devices
- 2 Pull drawer straight out and up



TANDEM plus BLUMOTION



Lateral stabilizer for 563/569

Application



Description

- Increases lateral stability
- Synchronizes left and right runners to prevent drawer racking
- Ideal for wide applications using TANDEM 563/569 H/., and F/A series
- Does not increase load capacity

Specifications

- Frameless and blocked-out face frame applications **229** (9") to **686** (27") length drawers
- Face frame applications with rear attachment **305** (12") to **533** (21") length drawers
- Recommended for opening widths **610** (24") and wider



Lateral stabilizer set



Set includes:

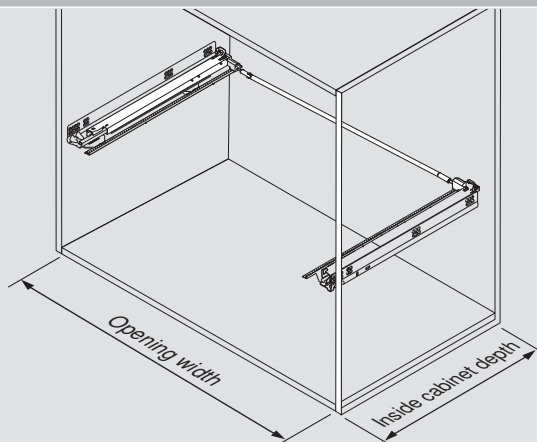
- Pinion housing (qty 2)
 - Gear rack with locating tabs (qty 2)
 - Linkage rod, length **1054** (41-1/2")
 - Pinion adapter (qty 2)
 - Locking clip (qty 2)
- Installation instructions

Part no.

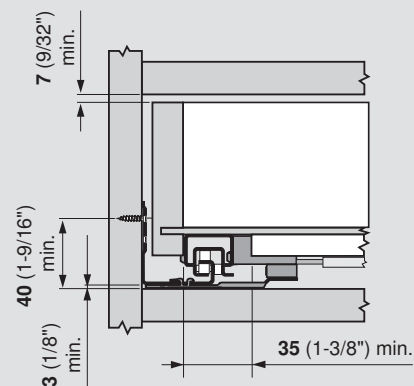
Lateral stabilizer set

ZST.686TU01

Space requirements



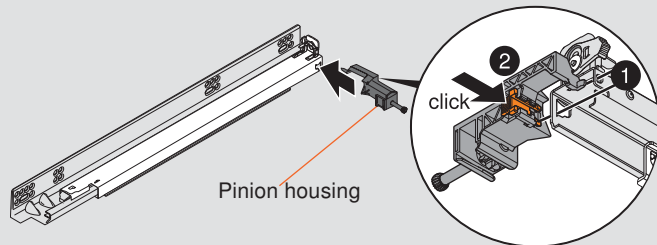
- Maximum opening width **1352** (53-7/32")
- Minimum inside cabinet depth = setback + runner length + **18** (23/32")



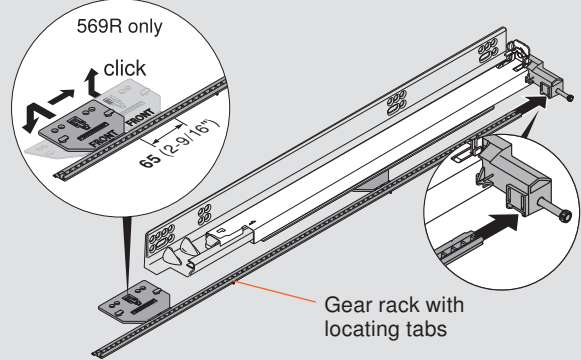
NOTE: TANDEM runners will sit **3** (1/8") higher when using the lateral stabilizer in bottom mount applications and may have to be raised for some bottom mount drawer applications using SERVO-DRIVE

Step 1 – Attach left and right pinion housings

- 1 Insert locating pins into TANDEM runner
- 2 Press orange locking clips to lock into place

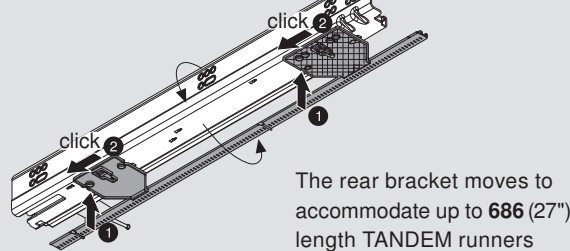


Step 2 – Slide gear racks into pinion housings

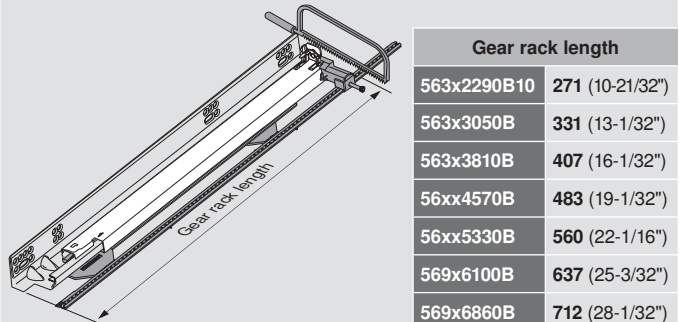


Step 3 – Install gear racks

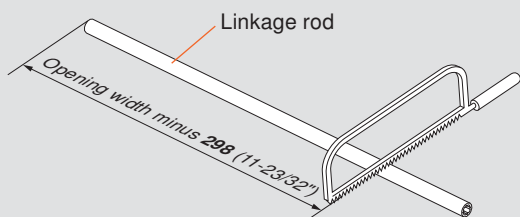
- 1 Insert locating tabs into cut-outs on bottom of runners
- 2 Slide backward to lock into place



Step 4 – Cut gear racks to length

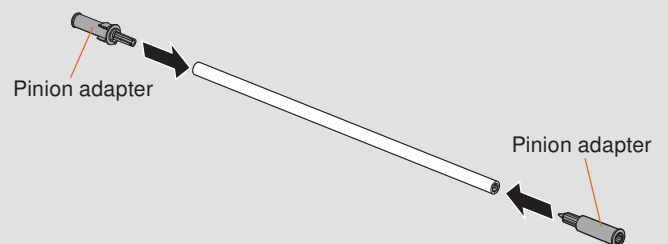


Step 5 – Cut linkage rod to length



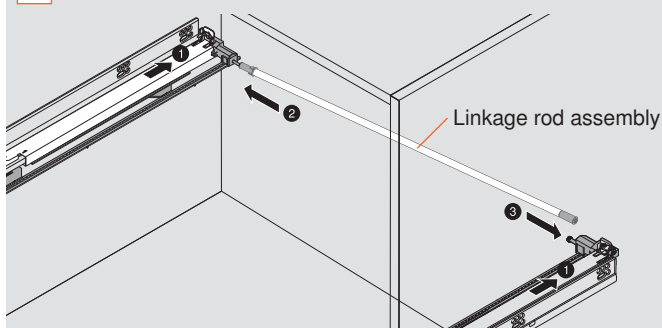
Linkage rod length equals opening width minus **298** (11-23/32")

Step 6 – Press pinion adapters into linkage rod



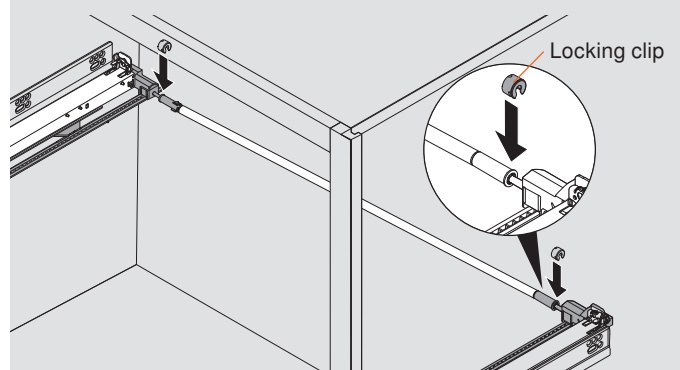
Step 7 – Install linkage rod assembly

- 1 Close drawer runners
- 2 Slide linkage rod assembly left onto left pinion
- 3 Slide right pinion adapter onto right pinion



Step 8 – Install locking clips

Install locking clips on both adapters



TANDEM plus BLUMOTION



Roll-out Shelf

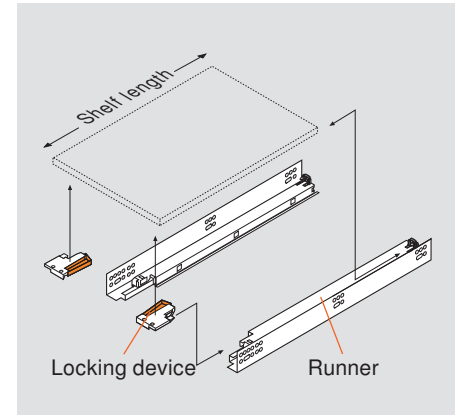
Application



Description

- Possible with any TANDEM runner
- 100 lb static load capacity

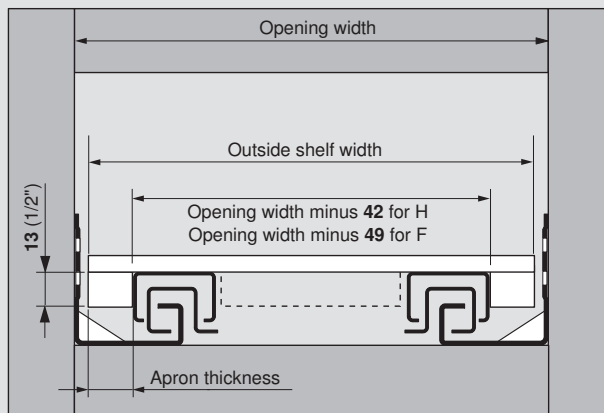
Basic Components



Components

Shelf size and position in opening

Front view



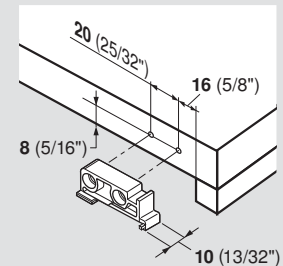
Calculating outside tray width

| | F series runner | | | H series runner | | | | |
|---------------------------|-----------------|-------------|-------------|-----------------|-------------|------------|-----------|-------------|
| Apron thickness | 19 (3/4") | 18 (23/32") | 17 (21/32") | 16 (5/8") | 15 (19/32") | 14 (9/16") | 13 (1/2") | 12 (15/32") |
| Deduct from opening width | 11 (7/16") | 13 (1/2") | 15 (19/32") | 10 (13/32") | 12 (15/32") | 14 (9/16") | 16 (5/8") | 18 (23/32") |

NOTE: Maximum apron thickness 16 (5/8") for H / Maximum apron thickness 19 (3/4") for F

Rear mounting block

Attach rear mounting block to the back of the shelf instead of notching and boring



- Eliminates the need to edge bore holes for hooks on roll-outs

NOTE: Shelf length = specified length for runner minus 10 (13/32")

| Part no. | |
|---------------------|-------------|
| Rear mounting block | T51.7000.01 |
| Installation screw | 6064N |

Standard locking device with side-to-side adjustment



- One right and one left required per drawer
- Self-adjusting drawer length tolerance
- Minimum inside drawer width 170 (6-11/16")
- Height adjustment +3 (1/8")
- Side-to-side adjustment ±1.5 (1/16")
- For use with 563/569 series runners only
- For other options see page 32

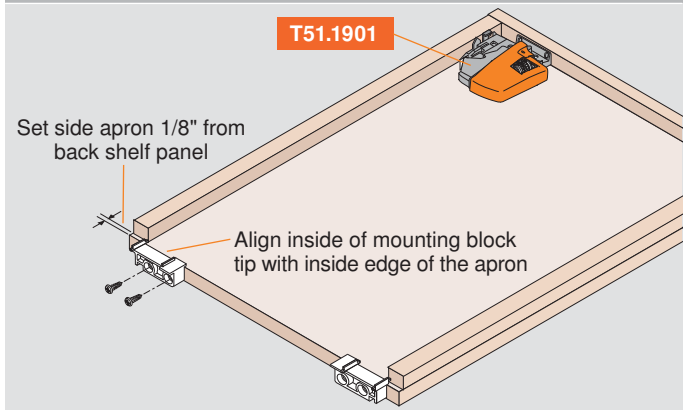
Part no.

Right locking device T51.1901 R

Installation Left locking device T51.1901 L

page 11 Installation screw 606N or 606P

Shelf assembly



Bottom Mount Drawer

TANDEM plus BLUMOTION



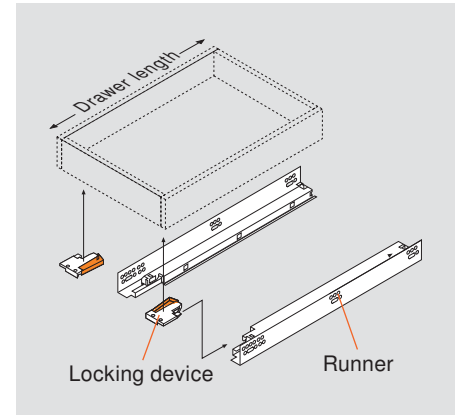
Application



Description

- Use 563H, 563, or 563F series in 15", 18" and 21" lengths
- Face frame or frameless cabinets
- Application is possible with any TANDEM 563/569 locking device
- 13 (1/2") to 19 (3/4") drawer thickness
- 100 lb static load capacity

Basic Components



Components

Runner set

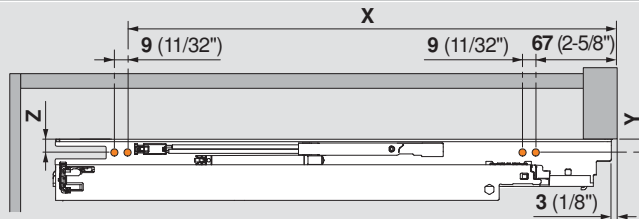
One set required per drawer



| Maximum drawer material thickness | For overall cabinet depth | Drawer length | TANDEM plus BLUMOTION |
|-----------------------------------|---------------------------|---------------|-----------------------|
| 16 (5/8") | 610 (24") | 533 (21") | 563.5330B |
| | 533 (21") | 457 (18") | 563.4570B |
| | 610 (24") | 533 (21") | 563H5330B |
| | 533 (21") | 457 (18") | 563H4570B |
| 19 (3/4") | 457 (18") | 381 (15") | 563H3810B |
| | 610 (24") | 533 (21") | 563F5330B |
| | 533 (21") | 457 (18") | 563F4570B |
| | 457 (18") | 381 (15") | 563F3810B |
| Wood screw for installation | | | 606N or 606P |
| System screw for installation | | | 662.1150.HG |

Runner mounting specifications

Top view



| TANDEM plus BLUMOTION | Drawer length | Minimum inside cabinet depth | X | Y | Z |
|-----------------------|---------------|------------------------------|----------------|-------------|-------------|
| 563.5330B | 533 (21") | 557 (21-15/16") | 358 (14-3/32") | 12 (15/32") | 19 (3/4") |
| 563.4570B | 457 (18") | 480 (18-29/32") | 358 (14-3/32") | 12 (15/32") | 19 (3/4") |
| 563H5330B | 533 (21") | 557 (21-15/16") | 448 (17-5/8") | 12 (15/32") | 19 (3/4") |
| 563H4570B | 457 (18") | 480 (18-29/32") | 378 (14-7/8") | 12 (15/32") | 19 (3/4") |
| 563H3810B | 381 (15") | 404 (15-29/32") | 319 (12-9/16") | 12 (15/32") | 19 (3/4") |
| 563F5330B | 533 (21") | 557 (21-15/16") | 448 (17-5/8") | 15.5 (5/8") | 22.5 (7/8") |
| 563F4570B | 457 (18") | 480 (18-29/32") | 378 (14-7/8") | 15.5 (5/8") | 22.5 (7/8") |
| 563F3810B | 381 (15") | 404 (15-29/32") | 319 (12-9/16") | 15.5 (5/8") | 22.5 (7/8") |

TANDEM plus BLUMOTION



SPACE CORNER

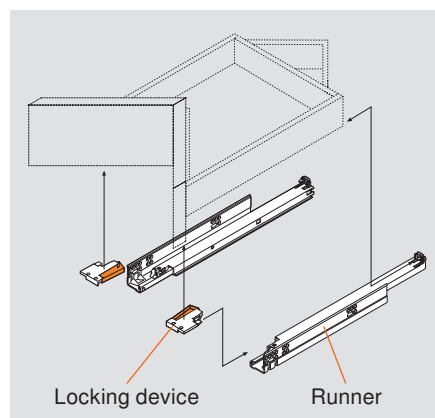
Application



Description

- Use longer length heavy duty TANDEM plus BLUMOTION runners
- Requires special cabinet and drawer construction (see note below)
- For **16** (5/8") maximum drawer side material use 569. series
- For **19** (3/4") maximum drawer side material use 569A series
- 150 lb static load capacity**

Basic Components



Components

Runner set

One set required per drawer



Sample SPACE CORNER drawer and cabinet plans are available for download at blum.com

| Corner cabinet size | Maximum 16 (5/8") drawer side thickness | Maximum 19 (3/4") drawer side thickness |
|-------------------------------|--|--|
| 36", 39" or 42" | 569.6860B | 569A6860B |
| Wood screw for installation | 606N or 606P | |
| System screw for installation | 662.1150.HG | |

NOTE: SPACE CORNER requires special cabinet and drawer construction. See suggestions on cabinet construction at blum.com.

Standard locking device with side-to-side adjustment



- One right and one left required per drawer
- Captive right and self-aligning left device
- Self-adjusting drawer length tolerance
- Steel base with synthetic, spring-loaded release levers
- Minimum inside drawer width **170** (6-11/16")
- Height adjustment **+3** (1/8")
- Side-to-side adjustment **±1.5** (1/16")
- For use with 563/569 series runners only
- For other options see page 32

Part no.

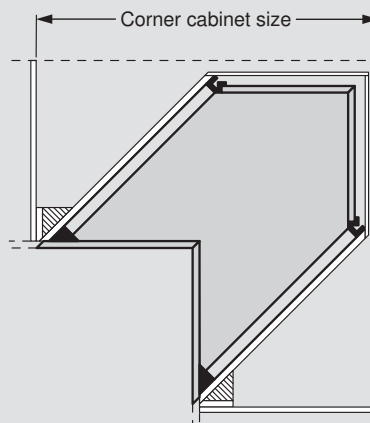
Right locking device **T51.1901 R**

Installation Left locking device **T51.1901 L**

page 11 Installation screw **606N or 606P**

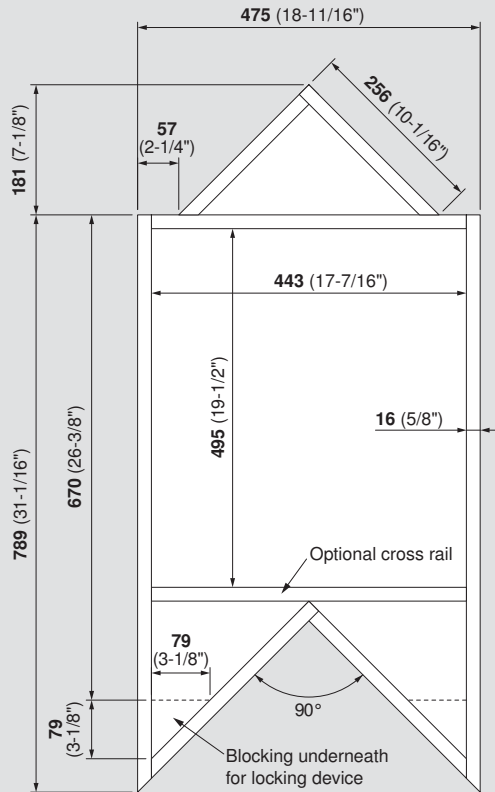
Measuring corner cabinet size

Top view



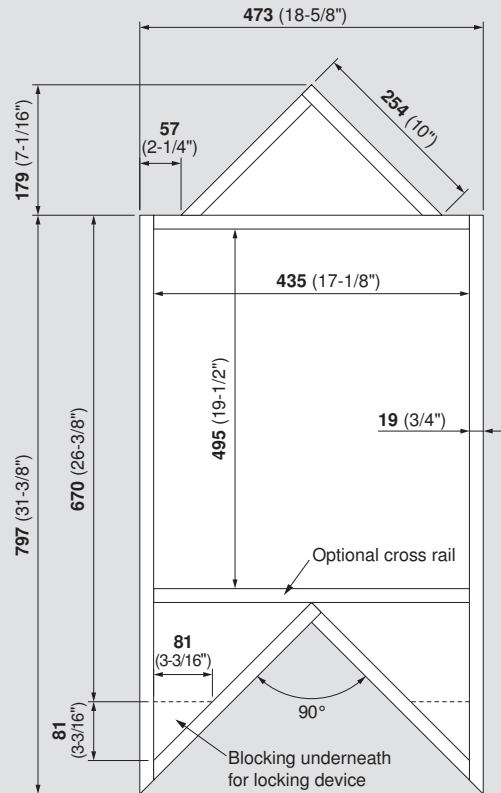
For a 39" SPACE CORNER using 5/8" material and 569.6860B

Top view



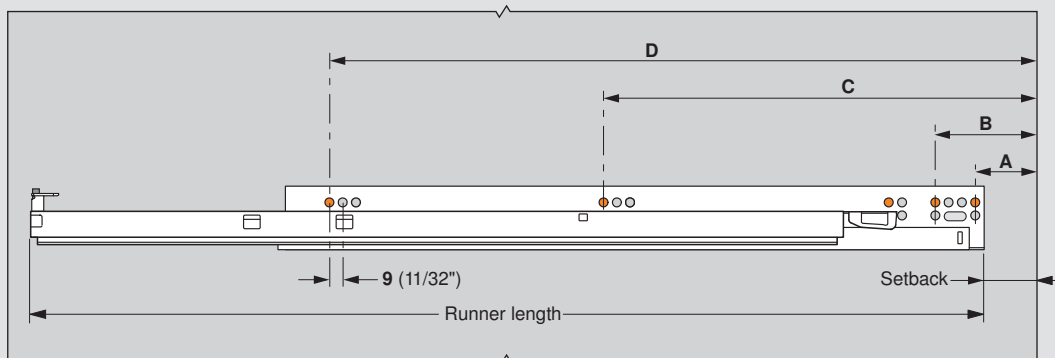
For a 39" SPACE CORNER using 3/4" material and 569A6860B

Top view



Mounting locations

Side view



NOTE: Detailed drawings for cabinet construction are available at blum.com

| TANDEM plus BLUMOTION | Drawer material | Setback | A | B | C | D |
|-----------------------|-----------------|---------------|----------------|----------------|-----------------|-----------------|
| 569.6860B | 16 (5/8") | 107 (4-7/32") | 114 (4-1/2") | 141 (5-9/16") | 365 (14-3/8") | 493 (19-13/32") |
| 569A6860B | 19 (3/4") | 116 (4-9/16") | 123 (4-27/32") | 150 (5-29/32") | 374 (14-23/32") | 502 (19-3/4") |

With Side-to-Side Adjustment

Standard

One right and one left required per drawer



- Captive right device and self-aligning left device
- Self-adjusting drawer length tolerance
- Steel base with synthetic, spring-loaded release levers
- Minimum inside drawer width **170** (6-11/16")
- Height adjustment **+3** (1/8")
- Side-to-side adjustment **±1.5** (1/16")

Part no.

| | |
|----------------------|---------------------|
| Right locking device | T51.1901 R |
| Left locking device | T51.1901 L |
| Installation screw | 606N or 606P |

Vertical mount

One right and one left required per drawer



- Vertical mount locking device used to minimize sub-front splitting
- Captive right device and self-aligning left device
- Self-adjusting drawer length tolerance
- Steel base with synthetic, spring-loaded release levers
- Minimum inside drawer width **170** (6-11/16")
- Height adjustment **+3** (1/8")
- Side-to-side adjustment **±1.5** (1/16")
- Minimum sub-front thickness **16** (5/8")
- Designed for **13** (1/2") drawer bottom recess

Part no.

| | |
|----------------------|----------------------|
| Right locking device | T51.1901.20 R |
| Left locking device | T51.1901.20 L |
| Installation screw | 606N or 606P |

Depth adjustable

One right and one left required per drawer






- Captive right device and self-aligning left device
- Self-adjusting drawer length tolerance
- Steel base with synthetic, spring-loaded release levers
- Minimum inside drawer width **170** (6-11/16")
- Height adjustment **+3** (1/8")
- Side-to-side adjustment **±1.5** (1/16")
- Depth adjustment **+2.5** (3/32"), preset at **0**
- Minimum sub-front thickness **13** (1/2")
- Designed for **13** (1/2") drawer bottom recess
- Integrated **3** (1/8") distance bumper for inset or overlay SERVO-DRIVE applications

Part no.

| | |
|----------------------|----------------------|
| Right locking device | T51.1901.PS R |
| Left locking device | T51.1901.PS L |
| Installation screw | 606N or 606P |

Without Side-to-Side Adjustment

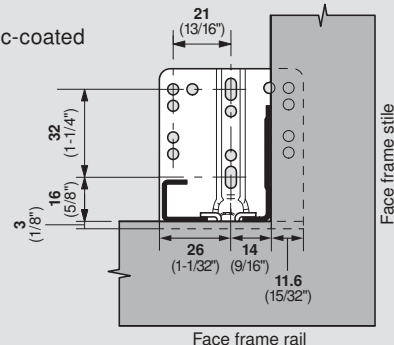
| Standard | | |
|---|---|----------------------|
| <p>One right and one left required per drawer</p>  | <ul style="list-style-type: none"> For use with standard applications Captive right device and self-aligning left device Self-adjusting drawer length tolerance Zinc die-cast with synthetic, spring-loaded release levers Minimum inside drawer width 124 (4-7/8") Height adjustment +3 (1/8") | |
| | Part no. | |
| | Right locking device | T51.1801 R |
| | Left locking device | T51.1801 L |
| | Installation screw | 606N or 606P |
| Vertical mount | | |
| <p>One right and one left required per drawer</p>  | <ul style="list-style-type: none"> Vertical mount locking device used to minimize sub-front splitting Captive right device and self-aligning left device Self-adjusting drawer length tolerance Zinc die-cast with synthetic, spring-loaded release levers Minimum inside drawer width 124 (4-7/8") Height adjustment +3 (1/8") Minimum sub-front thickness 16 (5/8") Designed for 13 (1/2") drawer bottom recess | |
| | Part no. | |
| | Right locking device | T51.1801.20 R |
| | Left locking device | T51.1801.20 L |
| | Installation screw | 606N or 606P |
| Narrow drawer | | |
| <p>One right and one left required per drawer</p>  | <ul style="list-style-type: none"> For use with narrow drawers Maximum dynamic load capacity 25 lb Captive right device and self-aligning left device Self-adjusting drawer length tolerance Vertical mount, two-piece nylon Minimum inside drawer width 95 (3-3/4") Height adjustment +3 (1/8") Minimum sub-front thickness 16 (5/8") Designed for 13 (1/2") drawer bottom recess | |
| | Part no. | |
| | Right locking device | T51.0801.20 R |
| | Left locking device | T51.0801.20 L |
| | Installation screw | 606N or 606P |

Screw-on bracket

Two required per drawer



- For TANDEM 552, 562 and 563 H/F series runners only
- Lateral self-alignment 3 (1/8")
- Non-handed, one-piece stamped steel design, zinc-coated
- Use at least three #6 wood screws
- Not for use with 9" runners



Part no.

Screw-on bracket

295.3750.02

NOTE: Illustration is for 562/563 series

Installation screw

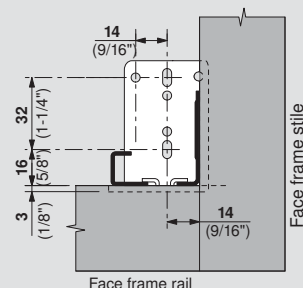
606N or 606P

Narrow screw-on bracket

Two required per drawer



- For TANDEM 552, 562 and 563 H/F series runners only
- For applications with side recess space limitations (end panel)
- Maximum dynamic load capacity 45 lb
- Lateral self-alignment 3 (1/8")
- Non-handed, one-piece stamped steel design, zinc-coated
- Maximum inside cabinet depth is 15 (19/32") less than 295.3750.02 allows
- Use at least three #6 wood screws
- Not for use with 9" runners



Part no.

Screw-on bracket

295.3550.01

NOTE: Illustration is for 562/563 series

Installation screw

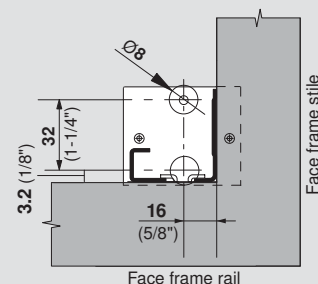
606N or 606P

Plug-in socket

Two required per drawer



- For TANDEM 552, 562 and 563 H/F series runners only
- Lateral self-alignment feature
- Non-handed, two-piece design
- Synthetic, natural color
- Non-detachable 8 (5/16") dowels, 9.5 (3/8") long
- 6 (1/4") minimum back panel thickness
- Use at least two #6 flat head wood screws
- Not for use with 9" runners



Part no.

Plug-in socket

295.6410

Installation screw

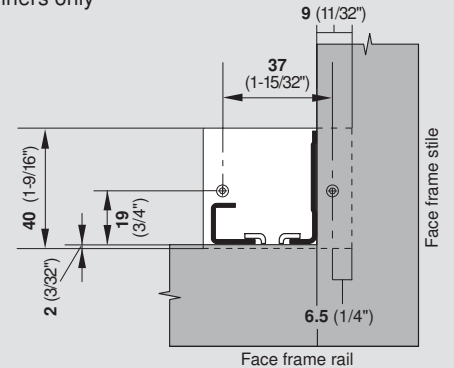
606N or 606P

Screw-on socket

Two required per drawer



- For TANDEM 552, 562 and 563 H/F series runners only
- Lateral self-alignment
- Non-handed, two-piece design
- Synthetic, natural color
- Use two #6 flat head wood screws
- Not for use with 9" runners



Part no.

Screw-on socket

295.6400

Installation screw

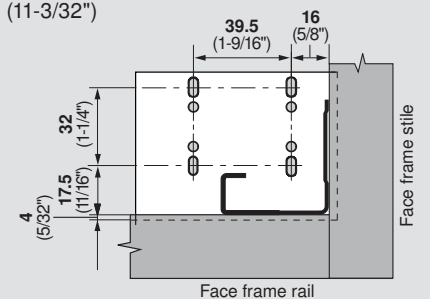
606N or 606P

Screw-on socket for 9" TANDEM plus BLUMOTION runners

Two required per drawer



- For TANDEM 562 and 563 H/F series 9" runners only
- For use only when installing 9" runners in face frame cabinets
- For inside cabinet depths **266** (10-15/32") to **282** (11-3/32")
- Minimum opening width **156** (6-5/32")
- Lateral self-alignment
- Non-handed, one piece design
- Synthetic, natural color
- Use at least three #6 wood screws



Part no.

Screw-on socket

295.3700.21

Installation screw

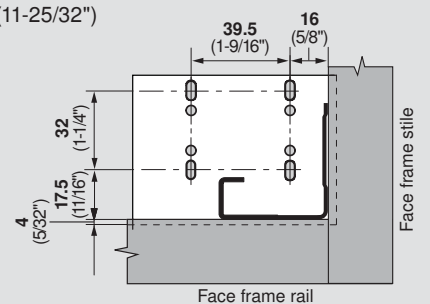
606N or 606P

Screw-on socket for 9" TANDEM plus BLUMOTION runners

Two required per drawer



- For TANDEM 562 and 563 H/F series 9" runners only
- For use only when installing 9" runners in face frame cabinets
- For inside cabinet depths **283** (11-5/32") to **299** (11-25/32")
- Minimum opening width **156** (6-5/32")
- Lateral self-alignment
- Non-handed, one piece design
- Synthetic, natural color
- Use at least three #6 wood screws



Part no.

Screw-on socket

295.3700.22

Installation screw

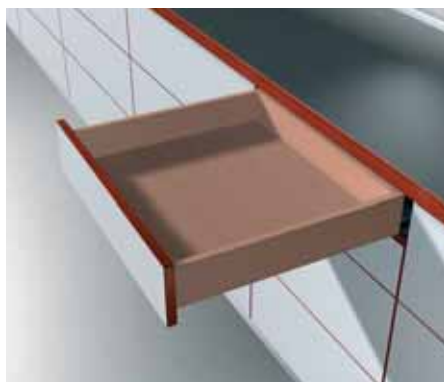
606N or 606P

TANDEM plus BLUMOTION



TIP-ON for TANDEM plus

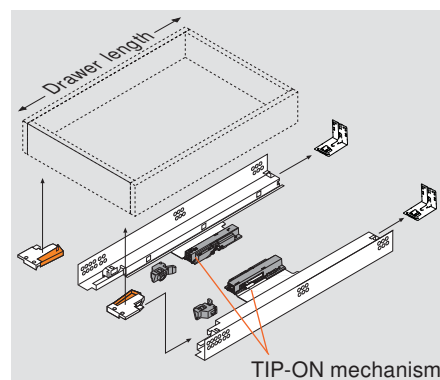
Overlay Application



Description

- Designed for drawers without pulls
- Opens the drawer with just a touch of the drawer front
- Tool-free attachment of the mechanism and trigger
- Optimal dynamic load capacity 45 lb
- 100 lb static load capacity**
- Only works with TANDEM plus 562 H series runners without BLUMOTION**

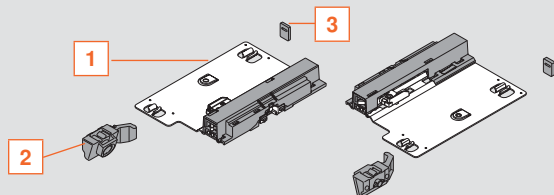
Basic Components



Components

TIP-ON for TANDEM plus set

One set required per drawer



Set includes:

- TIP-ON mechanisms (qty 2)
- Adjustable triggers (qty 2)
- Rear hook spacers (qty 2)

Part no.

TIP-ON for TANDEM plus set

T55.7150S

Runner set

One set required per drawer



| For overall cabinet depth | Drawer length | TANDEM plus |
|-------------------------------|---------------|---|
| | | Maximum 16 (5/8") drawer side thickness |
| 610 (24") | 533 (21") | 562H5330C |
| 533 (21") | 457 (18") | 562H4570C |
| 457 (18") | 381 (15") | 562H3810C |
| 381 (15") | 305 (12") | 562H3050C |
| Wood screw for installation | | 707N |
| System screw for installation | | 661.1300.HG |

Standard locking device for 552/562/568 series



- One right and one left required per drawer
- Minimum inside drawer width **121 (4-3/4")**
- Height adjustable **+3 (1/8")**

Part no.

| | |
|----------------------|----------------------|
| Right locking device | T51.1700.04 R |
| Left locking device | T51.1700.04 L |
| Installation screw | 612TH |

Rear mounting bracket for frame cabinets



For use when installing TANDEM runners in face frame cabinets. Not necessary for frameless cabinet installation.

- Two required per drawer
- Depth and lateral self-alignment
- Zinc-coated steel

Part no.

| | |
|--------------------|--------------------|
| Non-handed bracket | 295.3750.02 |
| Installation screw | 612TH |

Specifications

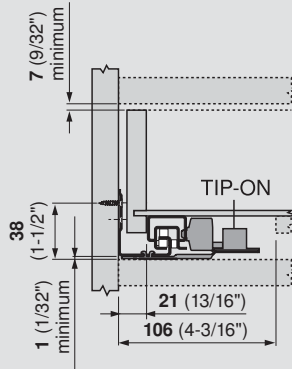
| | |
|--------------------------|-----------|
| Maximum drawer thickness | 16 (5/8") |
| Lengths available | 12" - 21" |
| Static load capacity | 100 lb |

TANDEM plus BLUMOTION



TANDEM 562H dimensions

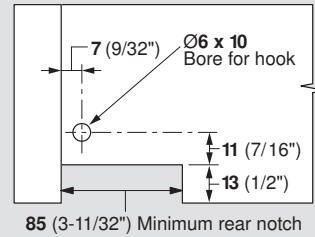
Front view



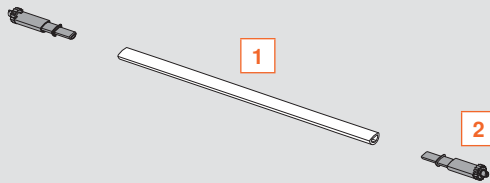
NOTE: Minimum cabinet opening width for TIP-ON is 229 (9")

Drawer back preparation

Rear view



TIP-ON for TANDEM plus synchronization set (optional)



- Recommended for cabinet widths from 610 (24") to 1220 (48") wide (face frame and frameless)
- Synchronizes left and right TIP-ON mechanisms to improve function on wide drawers

Set includes:

- 1 Linkage rod, 908 (35-3/4") cut to length
- 2 Pinion gears (qty 2)
- Instruction sheet

Part no.

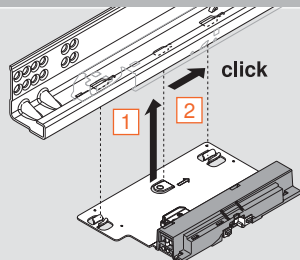
TIP-ON for TANDEM plus synchronization set

T55.908WR

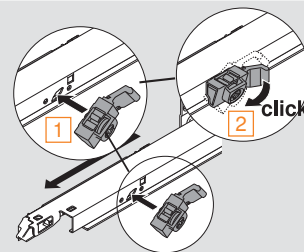
NOTE: Linkage rod length equals opening width minus 277 (10-15/16"). Maximum opening width equals 1185 (46-5/8").

Assembly and Adjustment

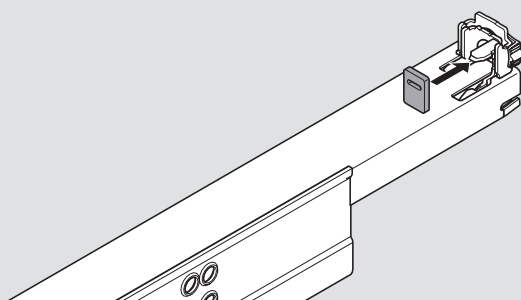
Step one – Attachment of mechanism



Step two – Attachment of trigger

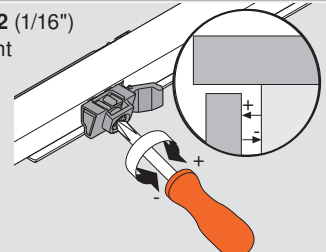


Step three – Attachment of rear hook spacer



Step four – Front gap adjustment

Trigger allows -1 (1/32") in and +2 (1/16") out adjustment of the drawer front



NOTE: Minimum front gap = 2.5 (3/32")

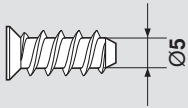
TANDEM plus BLUMOTION



Accessories and Assembly Aids

Deep thread system screw

- Pilot bore Ø5 (3/16") hole



Part no.

| | |
|--------------------|--------------------|
| #6 x 11.5, #2 POZI | 662.1150.HG |
| #7 x 13, #2 POZI | 661.1300.HG |
| #7 x 14.5, #2 POZI | 661.1450.HG |

Deep thread wood screw

- Pilot bore Ø2.5 (3/32") hole



Part no.

| | |
|------------------------|-------------|
| #6 x 5/8", #2 Phillips | 606N |
| #6 x 5/8", #2 POZI | 606P |
| #7 x 5/8", #2 Phillips | 707N |

Truss head wood screw

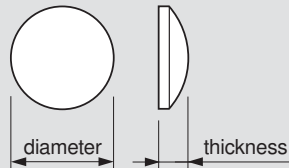
- Pilot bore Ø2.5 (3/32") hole



Part no.

| | |
|------------------------|--------------|
| #6 x 1/2", #2 Phillips | 612TH |
|------------------------|--------------|

Bumpers



- Cushions door closing
- Clear with a self-adhesive back

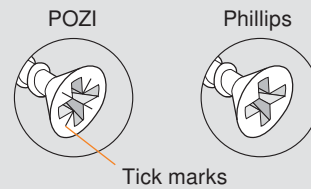
Part no.

| | |
|---------------------------|---------------|
| Ø7.5 (9/32") x 2 (3/32") | FX4041 |
| Ø12 (15/32") x 3.5 (1/8") | SJ5312 |

POZI DRIVER and bits



A POZI screwdriver (different from Phillips) is the most crucial tool you can use to assure that full torque is applied to all Blum mounting screws. POZI screws can be identified by the distinctive "tick" marks located in the center of the screw head recess.



Part no.

| | |
|--------------------------|----------------------|
| #2 POZI DRIVER | POZI DRIVER |
| 1/4" Magnetic bit holder | BIT HOLDER |
| #2 x 1" POZI bit insert | POZI BIT #2x1 |
| #2 x 2" POZI bit insert | POZI BIT #2x2 |

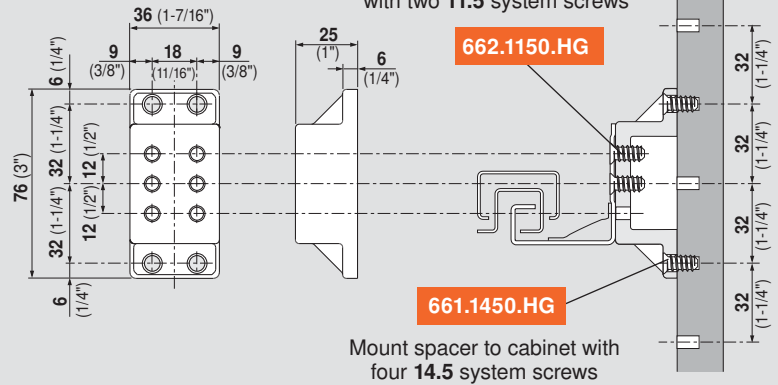
Side spacer

For spacing out TANDEM runners from the cabinet side for clearance in interior roll-out applications



Part no.

Side spacer - 1" thick

T59.3570**Side spacer**

NOTE: Use (2) pieces per runner up to 15" lengths and (3) pieces per runner 18" or longer

TANDEM end cap

- To cover the front edge of TANDEM runners when used in an interior roll-out application
- Can be used with TANDEM 562/563 H/F. runners



Part no.

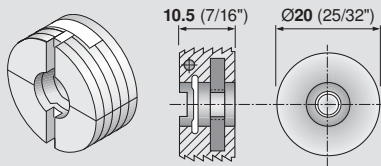
Right end cap

295.5520

Left end cap

295.5521**Drawer front adjuster**

- Nylon housing with pre-mounted 8-32 steel nut
- For four-sided drawers
- Adjusts height and side-to-side by 5 (3/16")



Part no.

Drawer front adjuster

295.1000.21

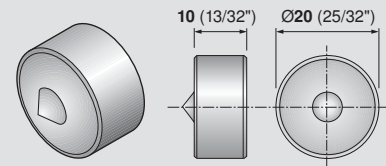
MINIPRESS insertion ram

MZM.0095

Ø20 mm right handed drill bit

M01.ZB20.02 RH**Drawer front adjuster marking gauge**

- For marking center holes for press-in drawer front adjusters
- For four-sided drawers



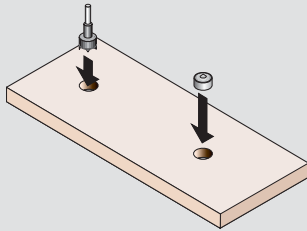
Part no.

Marking gauge

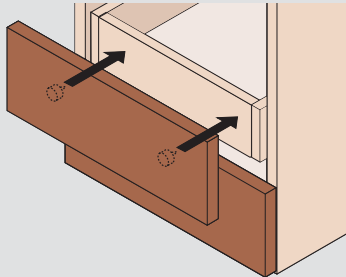
65.2950.10

Using the marking gauge

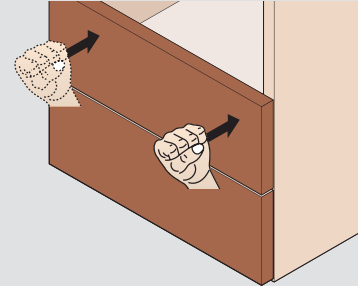
- 1 Pre-bore for front adjusters and then insert marking gauges into drawer front



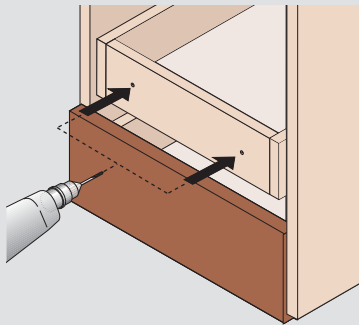
- 2 Align the drawer front to make marks in the drawer box



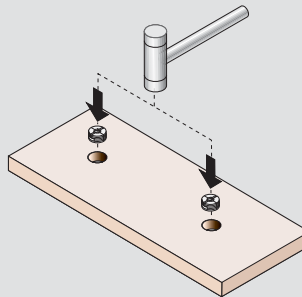
- 3 Align the drawer front and give a light tap to make marks in the drawer box



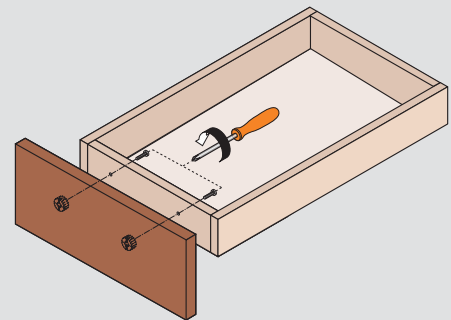
- 4 Bore Ø5 (3/16") holes through the drawer box



- 5 Remove marking gauges and insert drawer front adjusters manually or with a MINIPRESS insertion ram

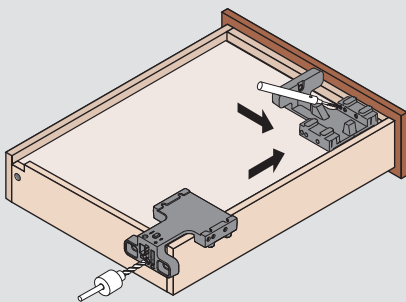


- 6 Install and adjust drawer front



Concealed Runner Template

- Essential tool for drawers using any series TANDEM runners
- To bore the Ø6 holes for rear hooks
- Pre-bore Ø2.5 hole for TANDEM locking devices at the required angle

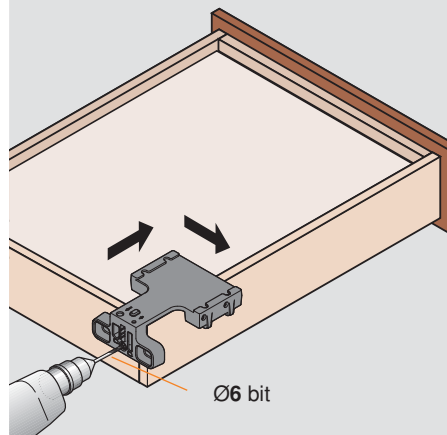


Part no.

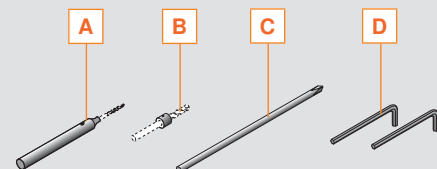
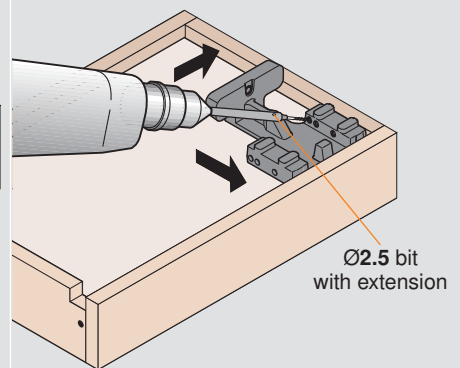
| | |
|---------------------------------------|--------------------|
| Template | T65.1600.01 |
| Accessories (order separately) | |
| Ø2.5 mm drill bit | DB-2.5mm |
| Ø6 mm drill bit | DB-6mm |
| Tool set | T65.9000 |

Using the Concealed Runner Template

- 1 Bore rear fixing holes



- 2 Pre-bore holes for locking device screws



Tool set includes:

- A** Ø2.5 drill bit extension
- B** Ø6 stop collar
- C** #2 Phillips screwdriver tip
- D** Allen wrenches

NOTE: Items NOT sold separately

Universal individual template



- For pre-boring TANDEM drawer runners
- Also used for marking/pre-boring other Blum drawer systems, AVENTOS locating pins, hinge mounting plates, BLUMOTION adapters, and TIP-ON adapters
- Calibrated scale for accurate setting

Set includes:

- Universal individual template
- Ø2.5 and Ø5 stop collars
- Allen wrench

Part no.

Universal individual template

65.1051.02

Cabinet profile template set



- Used for pre-boring holes for TANDEM drawer runners
- Also used for marking/pre-boring other Blum drawer systems, AVENTOS locating pins and hinge mounting plates

Part no.

Cabinet profile template

65.1000.01

Replacement template

65.1001.01

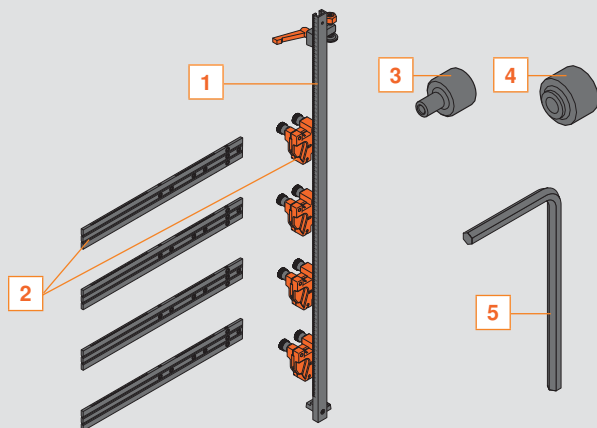
Ø2.5 mm drill bit

DB-2.5mm

Ø5 mm drill bit

DB-5mm

Components



Set includes:

- Rail, 1 meter long
- Replacement template (qty 4)
- Ø2.5 stop collar
- Ø5 stop collar
- Allen wrench

NOTE: ONLY the replacement template is sold separately



Blum's Ideas for Functional Kitchens

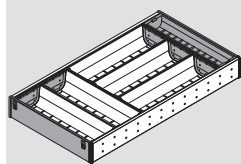
This adjustable organization solution for wood drawers is ideal for storing items in the kitchen and throughout the home.

The spring loaded compensation tray and side rails ensure that each kit will fit into an inside drawer length from 19 - 1/4" to 20".

The removeable trays are made of high quality nylon and stainless steel, and are dishwasher safe up to 170°F.

blum.com/ideas

Flatware



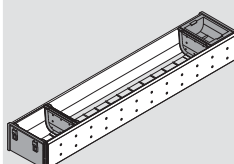
- Width **284** (11-3/16")
- Height **65** (2-9/16")

Part no.

21" drawer length

ZHI.533BI3A

Odds and ends



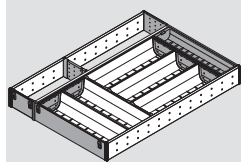
- Width **108** (4-1/4")
- Height **65** (2-9/16")

Part no.

21" drawer length

ZHI.533BI1A

Flatware



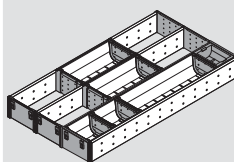
- Width **381** (15")
- Height **65** (2-9/16")

Part no.

21" drawer length

ZHI.533KI4A

Odds and ends



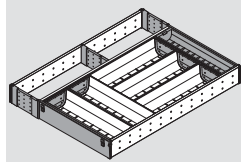
- Width **302** (11-7/8")
- Height **65** (2-9/16")

Part no.

21" drawer length

ZHI.533MI3A

Flatware



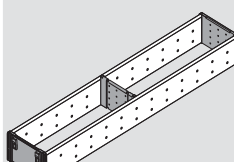
- Width **400 to 419** (15-3/4" to 16-1/2")
- Height **65** (2-9/16")

Part no.

21" drawer length

ZHI.533TI4A

Utensils



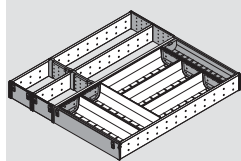
- Width **108** (4-1/4")
- Height **65** (2-9/16")

Part no.

21" drawer length

ZHI.533FI1A

Flatware



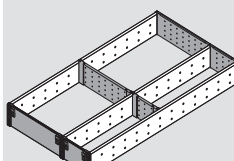
- Width **477 to 495** (18-3/4" to 19-1/2")
- Height **65** (2-9/16")

Part no.

21" drawer length

ZHI.533TI5A

Utensils



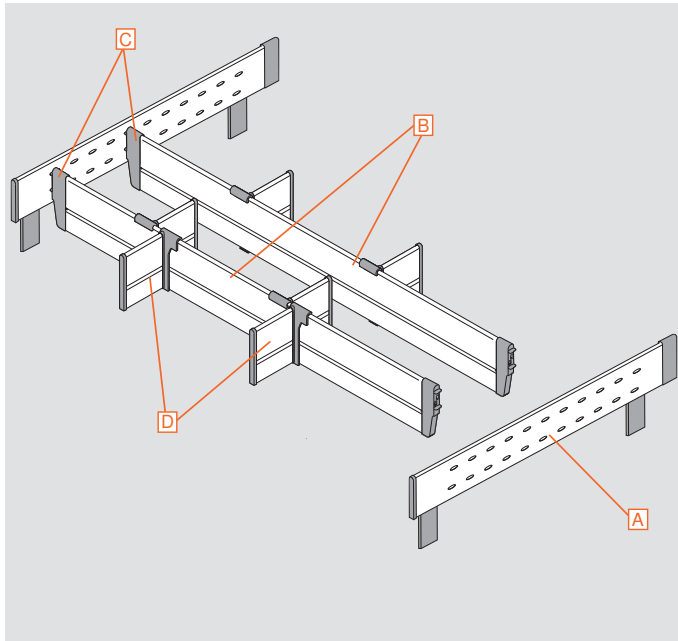
- Width **294** (11-9/16")
- Height **65** (2-9/16")

Part no.

21" drawer length

ZHI.533FI3A

Deep Drawer



| A Interior side rail | |
|--|--------------------|
| <ul style="list-style-type: none"> Two required Length 475 (18-11/16") Height 131 (5-3/16") | Part no. |
| Interior side rail | ZHI.533SS65 |

| B Cross divider | |
|--|------------------|
| <ul style="list-style-type: none"> Length 1077 (42-3/8"), cut to size Inside drawer width minus 62 (2-7/16") Height 113 (4-1/2") Gray | Part no. |
| Cross divider | Z40H1077A |

| C Spring loaded connector | |
|---|-----------------|
| <ul style="list-style-type: none"> Two required Dust gray | Part no. |
| Spring loaded connector | Z40H000A |

| D Lateral divider | |
|---|--------------------|
| <ul style="list-style-type: none"> Length 100 (3-15/16") Height 116 (4-9/16") Gray | Part no. |
| Lateral divider | Z43H100S.01 |

Accessories

| ORGA-LINE Knife holder | |
|--|-----------------|
| <ul style="list-style-type: none"> Length 280 (11") Width 180 (7-1/8") Holds up to nine knives of different sizes High quality nylon and stainless steel Dishwasher safe up to 170°F Handle supports (qty 4) | Part no. |
| Knife holder | ZSZ.02M0 |

| ORGA-LINE Spice tray | |
|---|------------------|
| <ul style="list-style-type: none"> Width 282 (11-1/8") Inside storage width 260 (10-1/4") Height 121 (4-3/4") Easy removal from drawer High quality nylon and stainless steel Set includes two trays and four feet | Part no. |
| Spice tray | ZFZ.38G01 |

| Plate holder | |
|---|-----------------|
| <ul style="list-style-type: none"> Adjustable width 186 to 322 (7-5/16" to 12-11/16") Overall height 170 (6-11/16") Holds up to 12 plates Non-slip bottom High quality nylon and stainless steel | Part no. |
| Plate holder | ZC7T0350 |

TANDEM plus BLUMOTION



Additional Information

Conversion chart

| mm | inch | |
|------|-------|------|
| 1 | 1/32 | .031 |
| 1.5 | 1/16 | .063 |
| 2 | 3/32 | .094 |
| 3 | 1/8 | .125 |
| 4 | 5/32 | .156 |
| 5 | 3/16 | .188 |
| 5.5 | 7/32 | .219 |
| 6 | 1/4 | .25 |
| 7 | 9/32 | .281 |
| 8 | 5/16 | .313 |
| 9 | 11/32 | .344 |
| 9.5 | 3/8 | .375 |
| 10 | 13/32 | .406 |
| 11 | 7/16 | .438 |
| 12 | 15/32 | .469 |
| 13 | 1/2 | .5 |
| 13.5 | 17/32 | .531 |
| 14 | 9/16 | .563 |
| 15 | 19/32 | .594 |
| 16 | 5/8 | .625 |
| 17 | 21/32 | .656 |
| 17.5 | 11/16 | .688 |
| 18 | 23/32 | .719 |
| 19 | 3/4 | .75 |
| 20 | 25/32 | .781 |
| 20.5 | 13/16 | .813 |
| 21 | 27/32 | .844 |
| 22 | 7/8 | .875 |
| 23 | 29/32 | .906 |
| 24 | 15/16 | .938 |
| 24.5 | 31/32 | .969 |
| 25.4 | 1 | 1 |



SERVO-DRIVE

SERVO-DRIVE is an electrical opening assist for TANDEM and TANDEMBOX. Drawers open automatically with just a touch of the drawer front or with a light pull of the handle. This unique feature is based on an electrical drive unit that, once activated, opens the drawer for you.

Existing cabinets can be easily retrofitted with SERVO-DRIVE. No modifications to the drawer system are necessary when upgrading.

With SERVO-DRIVE, the drawer is not connected to the drive unit. This enables the drawer to be stopped at any position, providing you full control.



Connect With Us on Social Media

Be sure to connect with us on social media for additional resources for information regarding tips on installation, maximizing storage space, new products and other news and events going on inside Blum.

Find us by searching "Blum Inc" in the search bar.



Part Number Index

TANDEM plus BLUMOTION



| Part no. | Page no. | Part no. | Page no. | Part no. | Page no. |
|-------------|----------|----------------|----------|-------------|----------|
| 295.1000.21 | 39 | BIT HOLDER | 38 | ZHI.533TI5A | 42 |
| 295.3550.01 | 34 | DB-2.5mm | 40, 41 | ZSZ.02M0 | 43 |
| 295.3700.21 | 35 | DB-5mm | 41 | | |
| 295.3700.22 | 35 | DB-6mm | 40 | | |
| 295.3750.02 | 34 | FX4041 | 38 | | |
| 295.5520 | 39 | MZM.0095 | 39 | | |
| 295.5521 | 39 | M01.ZB20.02 RH | 39 | | |
| 295.6400 | 35 | POZI DRIVER | 38 | | |
| 295.6410 | 34 | POZI BIT #2x1 | 38 | | |
| 562H3050C | 36 | POZI BIT #2x2 | 38 | | |
| 562H3810C | 36 | SJ5312 | 38 | | |
| 562H4570C | 36 | T51.0801.20 R | 33 | | |
| 562H5330C | 36 | T51.0801.20 L | 33 | | |
| 563.4570B | 12, 29 | T51.1700.04 R | 36 | | |
| 563.5330B | 12, 29 | T51.1700.04 L | 36 | | |
| 563F2290B10 | 16 | T51.1801 R | 33 | | |
| 563F3050B | 16 | T51.1801 L | 33 | | |
| 563F3810B | 16, 29 | T51.1801.20 R | 33 | | |
| 563F4570B | 16, 29 | T51.1801.20 L | 33 | | |
| 563F5330B | 16, 29 | T51.1901 R | 32 | | |
| 563H2290B10 | 14 | T51.1901 L | 32 | | |
| 563H3050B | 14 | T51.1901.20 R | 32 | | |
| 563H3810B | 14, 29 | T51.1901.20 L | 32 | | |
| 563H4570B | 14, 29 | T51.1901.PS R | 32 | | |
| 563H5330B | 14, 29 | T51.1901.PS L | 32 | | |
| 569.6100B | 18 | T51.7000.01 | 28 | | |
| 569.6860B | 18, 30 | T55.7150S | 36 | | |
| 569.7620B | 18 | T55.908WR | 37 | | |
| 569A6100B | 20 | T59.3570 | 39 | | |
| 569A6860B | 20, 30 | T59.A5P0S | 22 | | |
| 569A7620B | 20 | T65.1600.01 | 40 | | |
| 569F4570B | 20 | T65.9000 | 40 | | |
| 569F5330B | 20 | ZST.686TU01 | 26 | | |
| 569H4570B | 18 | Z40H000A | 43 | | |
| 569H5330B | 18 | Z40H1077A | 43 | | |
| 606N | 38 | Z43H100S.01 | 43 | | |
| 606P | 38 | ZC7T0350 | 43 | | |
| 612TH | 38 | ZFZ.38G0I | 43 | | |
| 65.1000.01 | 41 | ZHI.533BI1A | 42 | | |
| 65.1001.01 | 41 | ZHI.533BI3A | 42 | | |
| 65.1051.02 | 41 | ZHI.533FI1A | 42 | | |
| 65.2950.10 | 39 | ZHI.533FI3A | 42 | | |
| 661.1300.HG | 38 | ZHI.533KI4A | 42 | | |
| 661.1450.HG | 38 | ZHI.533MI3A | 42 | | |
| 662.1150.HG | 38 | ZHI.533SS65 | 43 | | |
| 707N | 38 | ZHI.533TI4A | 42 | | |





Why Choose Blum



Blum, Inc. is a leading manufacturer of functional hardware for the kitchen cabinet and commercial casework industries specializing in lift systems, concealed hinges and drawer runner systems. Virtually all of the hardware needed to assemble and make cabinets functional is available within the wide range of quality Blum products. Blum supports the U.S. market with a network of more than 150 dependable distributors, 40+ knowledgeable Blum sales representatives and an experienced customer service department.

Commitment to Manufacturing in the U.S.

Blum manufactures many of its products in our 450,000 sq ft manufacturing, logistics and warehouse facility located in Stanley, North Carolina. Manufacturing closer to the customer allows Blum to react quickly to changing customer needs including unexpected surges in demand. Customer pickups and deliveries can be timed to better match their production schedules. Blum is committed to manufacturing in the U.S. for the U.S. market.



Product development at Blum considers all of the various customers who will come in contact with our products. With this "Global Customer Benefits" philosophy we strive to create advantages for all users.



Blum, Inc. is ISO 9001 certified which means that you are assured of consistent quality in every Blum product. They exceed the requirements of ANSI/BHMA standards for cycle life, static load and self-closing performance.



Please visit blum.com for information on other Blum products
LIT:TDM1100.12.18 Ident. 26288480 © 2018 Blum, Inc.

Blum, Inc.
7733 Old Plank Rd.
Stanley, NC 28164
800-438-6788
blum.com

FSC Logo



ISO 9001
Certified Quality
System

