

8400 Full Extension Box or File Drawer Slide

Medium Duty

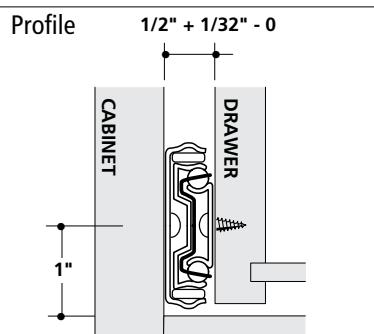
Number	8400 Full Extension Drawer Slide
Mounting	Side
Action	Telescopic Movement On Ball Bearings
Load Rating	100-Pound Class
Height	1-13/16"
Clearance	1/2" plus 1/32" minus 0" each side
Finish	Anochrome (ANO), Ebony Black (EB), White (WH)
Key Features	<ul style="list-style-type: none"> • 32mm hole pattern with direct access mounting • Lever disconnect for easy drawer removal • Non-handed design

Size, Finish, & Pack Availability

Available Pack Configurations			Screws
Bulk (B)	10 Sets per Carton		No
Poly (P)	1 Set per Bag; 10 Sets per Carton		Yes
Quantity (Q)	50 Sets; Multiple Cartons		No
Warehouse (WP)	1 Set per Bag; 10 Sets per Warehouse Pack/Display Carton		Yes

8400 Anochrome (ANO) Finish				8400 Ebony Black (EB) Finish				
Size	Bulk (B)	Poly (P)	Quantity (Q)	Warehouse (WP)	Size	Bulk (B)	Poly (P)	Quantity (Q)
8 in.	8400B 8	8400P 8	8400Q 8		8 in.	8400B EB 8	8400P EB 8	8400Q EB 8
10 in.	8400B 10	8400P 10	8400Q 10		10 in.	8400B EB 10	8400P EB 10	8400Q EB 10
12 in.	8400B 12	8400P 12	8400Q 12		12 in.	8400B EB 12	8400P EB 12	8400Q EB 12
14 in.	8400B 14	8400P 14	8400Q 14		14 in.	8400B EB 14	8400P EB 14	8400Q EB 14
16 in.	8400B 16	8400P 16	8400Q 16	8400WP 16	16 in.	8400B EB 16	8400P EB 16	8400Q EB 16
18 in.	8400B 18	8400P 18	8400Q 18	8400WP 18	18 in.	8400B EB 18	8400P EB 18	8400Q EB 18
20 in.	8400B 20	8400P 20	8400Q 20	8400WP 20	20 in.	8400B EB 20	8400P EB 20	8400Q EB 20
22 in.	8400B 22	8400P 22	8400Q 22	8400WP 22	22 in.	8400B EB 22	8400P EB 22	8400Q EB 22
24 in.	8400B 24	8400P 24	8400Q 24	8400WP 24	24 in.	8400B EB 24	8400P EB 24	8400Q EB 24
26 in.	8400B 26	8400P 26	8400Q 26	8400WP 26	26 in.	8400B EB 26	8400P EB 26	8400Q EB 26
28 in.	8400B 28	8400P 28	8400Q 28	8400WP 28	28 in.	8400B EB 28	8400P EB 28	8400Q EB 28

8400 White (WH) Finish			
Size	Bulk (B)	Poly (P)	Quantity (Q)
8 in.	8400B WH 8	8400P WH 8	8400Q WH 8
10 in.	8400B WH 10	8400P WH 10	8400Q WH 10
12 in.	8400B WH 12	8400P WH 12	8400Q WH 12
14 in.	8400B WH 14	8400P WH 14	8400Q WH 14
16 in.	8400B WH 16	8400P WH 16	8400Q WH 16
18 in.	8400B WH 18	8400P WH 18	8400Q WH 18
20 in.	8400B WH 20	8400P WH 20	8400Q WH 20
22 in.	8400B WH 22	8400P WH 22	8400Q WH 22
24 in.	8400B WH 24	8400P WH 24	8400Q WH 24
26 in.	8400B WH 26	8400P WH 26	8400Q WH 26
28 in.	8400B WH 28	8400P WH 28	8400Q WH 28



Recommended Fasteners	KV Part	Finish	Qty.
#7 x 5/8" Phillips Panhead	8500-93	Zinc (ZC)	1000
	8500-93 EB	Ebony Black (EB)	1000

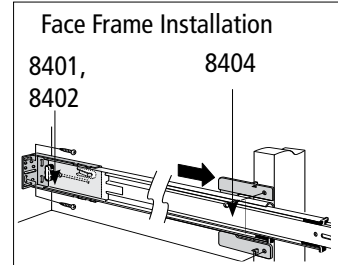
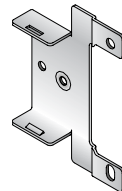
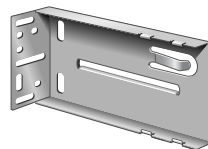
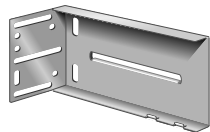


Brackets

8401 Rear Mounting Bracket

8402 Rear Mounting Bracket

8404 Front Mounting Bracket



- Non-handed snap-on design;
- 2-3/4" maximum adjustment.
- Extended rear flange
- Fits all KV 8400 Series Slides

- Non-handed snap-on design
- 2-3/4" maximum adjustment
- Fits all KV 8400 Series Slides

- Non-handed snap-on design
- Fits all KV8400 series product

Product	Pack
8401	20 Brackets per Carton

Product	Pack
8402	20 Brackets per Carton
8402BBL	400 Brackets per Carton
8402WP	20 Brackets per Warehouse Pack/ Display Carton

Product	Pack	Finish
8404	20 Brackets per Carton	Zinc (ZC)
8404B	400 Brackets per Carton	Zinc (ZC)
8404 WH	20 Brackets per Carton	White (WH)
8404 EB	20 Brackets per Carton	Ebony Black (EB)
8404BBL	400 Brackets per Carton	Zinc (ZC)
8404B KIT	Includes: 2 8403 brackets, 2 8404 brackets, screws, installation sheet.	

KV Pack Availability Code

Stock Item
Special Order

KNAPE & VOGT.
800.253.1561
www.kv.com

012041/0308