

MUV Full Extension Undermount Drawer Slide

- For use with drawer material from 1/2" to 5/8"
- 32mm hole pattern matches existing industry standards
- True full extension
- Integrated soft-close motion-dampening cylinder guides drawer into closed position
- Packaged complete with release levers




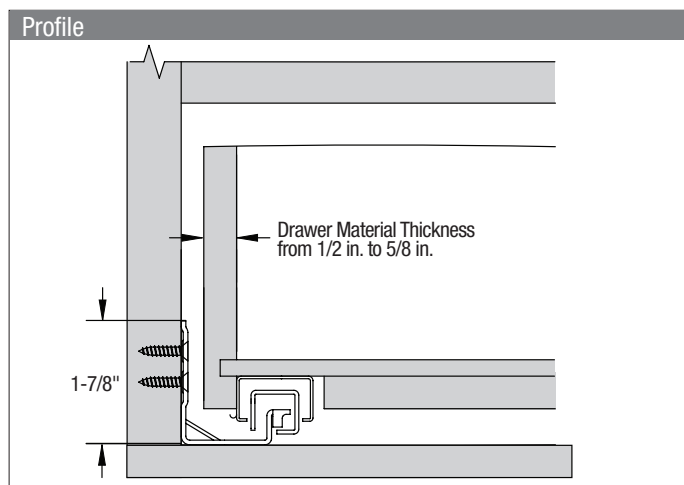
Closed Position

Number	MUV Full Extension Undermount Drawer Slide with Soft-Close Feature
Mounting Action	Undermount
Load Rating	Telescopic action
Height	75-pound Class
Finish	1-7/8"
	Zinc (ZC)

Pack Configurations	Screws
Bulk (B)	9"-12" : 4 Sets per Carton, includes front release levers 14"-22": 6 Sets per Carton, includes front release levers
	No

MuV Zinc (ZC) Finish	
Size	Bulk (B)
9 in.	MUVB 9
10 in.	MUVB 10
12 in.	MUVB 12
14 in.	MUVB 14
15 in.	MUVB 15
16 in.	MUVB 16
18 in.	MUVB 18
20 in.	MUVB 20
21 in.	MUVB 21
22 in.	MUVB 22

Recommended Fasteners	KV Part	Finish	Qty.
 #7 x 5/8" Flat Head Wood Screws	MUV-122	Zinc (ZC)	100
#6 x 1/2" Truss Head Wood Screws	MUV-123	Zinc (ZC)	100



Optimal Operation Guidelines for Drawer Width Based on Drawer Height:	
Drawer Height	Max. Width
Up to 6"	Slide Length + 10"
Greater than 6"	Slide length + 10" or 28", whichever is less
Greater than 8"	Slide Length + 10" or 24", whichever is less
Greater than 10"	Slide Length + 10" or 21", whichever is less

MUV-RBP Plastic Rear Mounting Bracket

Sizes 9-12"

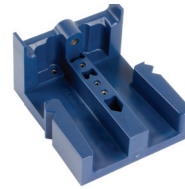


MUV-RBM Metal Rear Mounting Bracket

Sizes 14"+



MUV-121 Installation Jig



Accessories		
Product	Description	Carton Qty.
MUV-RBP	Plastic rear mounting brackets (sizes 9-12")	8 (4L, 4R)
MUV-RBM	Metal rear mounting brackets (sizes 14"+)	12 (non-handed)
MUV-121	Installation Jig	1