

# LOOX LED 2020

RECESS MOUNTED LIGHT/SURFACE MOUNTED DOWNLIGHT, ROUND



12 V SYSTEM



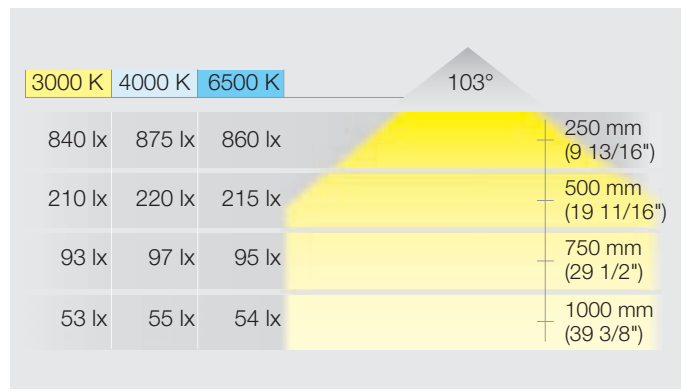
The LED 2020 generates uniform, evenly distributed light and is ideal for functional lighting in all areas. The light can be used in a variety of situations due to two installation types and three light colors.

IP44 = When recess mounted.

IP = Ingress Protection.

44 = Protected against solid objects greater than 1 mm in diameter.

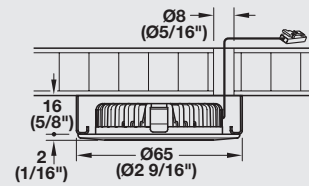
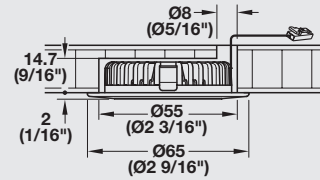
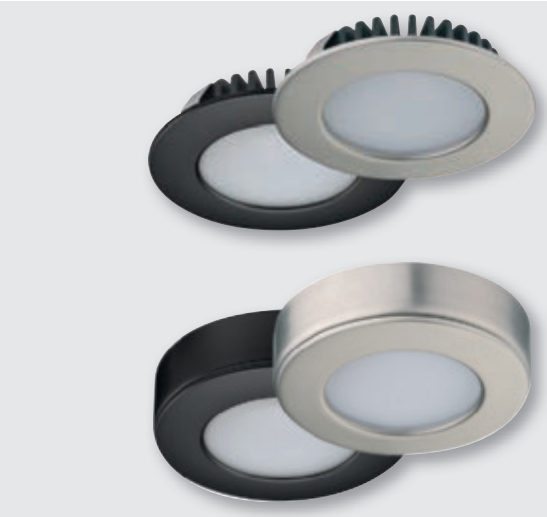
44 = Water splashed against the enclosure from any direction for three minutes. The fixture is tilted at any angle up to 15° from its normal position.



Item No.	833.72.020	833.72.023	833.72.030	833.72.021	833.72.024	833.72.031	833.72.022	833.72.025	833.72.032
Light Color (K)	3000 (warm white)			4000 (cool white)			6500 (daylight white)		
Diameter	65 (2 9/16")								
Height	14.7 (9/16")								
Degree of protection	IP44 as recess mounted light; IP20 with surface mount ring								
Wattage (W)	2.7								
Number of LEDs	6								
Light output (lm)	134			142			140		
Efficacy (lm/W)	50			53			52		
Color rendering index (CRI)	84			85			88		
Energy efficiency category	A								
Weighted energy consumption (kWh/1.000 h)	3.52								
Material/Finish	Zinc alloy, nickel-plated matt	Zinc alloy, black	Chrome colored	Zinc alloy, nickel-plated matt	Zinc alloy, black	Chrome colored	Zinc alloy, nickel-plated matt	Zinc alloy, black	Chrome colored
Supplied with	2 m (78 3/4") lead and mounting accessories								

**Note** Loox Lights and Drivers are "Suitable for use within Closet Storage Spaces"

LED 2020



- > Dimmable
- > Drill hole Ø: 55 mm (2 3/16")



- Surface Mount Ring
- > nickel-plated matt  
**Item No. 833.72.800**
  - > black  
**Item No. 833.72.801**
  - > chrome colored  
**Item No. 833.72.802**



- > Driver see page 42



With a surface mount ring the degree of protection is IP20.



**Note** Loox Lights and Drivers are "Suitable for use within Closet Storage Spaces"